

Volume 89

Number 4

15 October

1954.

(Established 1910)

NEW ZEALAND JOURNAL OF *Agriculture*

Published by

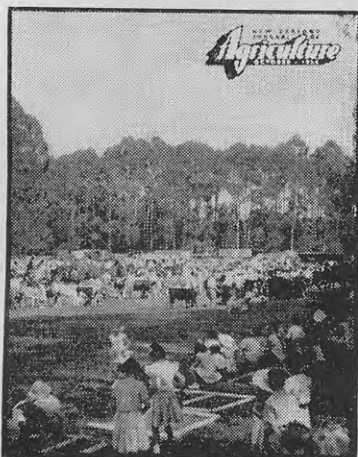
Direction

of

Rt. Hon. K. J. Holyoake,

Minister of Agriculture.

This Month's Cover



Another agricultural and pastoral show season is under way in New Zealand and fixtures will be held in many centres from now until the late autumn. This month's cover, which has been reproduced from a colour photograph by D. R. Brenchley, is of the 1953 Taumarunui and District A. and P. show at Taumarunui. Much of the farm land around Taumarunui is typical of the North Island hill country which was surface sown after the bush had been felled and burnt. Even today there are extensive areas of native timbers in the district and sawmilling is an important industry.

New Zealand Department of Agriculture

HEAD OFFICE:

Dominion Farmers' Institute Building,
Featherston Street, Wellington.

DIRECTOR-GENERAL:

E. J. Fawcett

ASSISTANT DIRECTOR-GENERAL:

R. B. Tennent

DIVISIONAL DIRECTORS:

Animal Industry ..	J. E. McIlwaine
Animal Research ..	J. F. Filmer
Dairy ..	H. A. Foy
Extension ..	P. W. Smallfield
Horticulture ..	A. M. W. Greig
Marketing ..	K. B. Longmore

Editor: G. J. Neale

TABLE OF CONTENTS

Renaissance of Surface-sown Grassland ..	P. W. Smallfield ..	322
Radio Broadcasts	328 and 336
Development of Swamp-land in Waituna District, Southland ..	W. Faithful ..	329
Rearing Chickens on the Colony System ..	H. K. Mullins ..	330
Dairy Produce Graded for Export	330
Porker and Baconer Competitions in 1954 ..	A. Longwill ..	331
Land Improvement: Breaking in Marlborough Hill Country ..	J. P. Beggs ..	336
Dairy Farming as a Business ..	R. T. du Faur ..	337
Destruction of Wild Colonies of Bees ..	S. Line ..	343
Meteorological Records for August	348
The Home Garden ..	B. P. Coleman and W. G. Crawford ..	349
Fork Lift Attachment for Hydraulically Equipped Tractors ..	N. B. Congdon ..	355
Services Provided by the Extension Division	357
White Muscle Disease of Lambs and Hoggets ..	D. C. Dodd ..	369
Show Dates	370
Wheat Growing Patterns in Canterbury and Their Effects on Yield ..	Jean G. Miller ..	371
Milking Goats ..	A. G. Brash and C. P. Harris ..	379
Control of Swarming in Honey Bees ..	D. Roberts ..	385
Care of Livestock during November	388
Silage Making; Supplementary Fodder Crop Production (Seasonal Notes)	389
Ventilation and Design of Laying and Brooder Houses ..	S. G. Haddon ..	391
Soft Turnips for Summer Milk Production ..	C. J. Hamblin ..	395
Recent Research Work: Tussock Grassland	397
The Propagation of Stone Fruit Trees ..	J. Coombe ..	399
University Students' Attitudes to Farming Life	412
Souffles are Simple ..	Eleanor Couston ..	413
Bringing Colour to Meals ..	Daphne Eilers ..	416
The Flower Garden ..	L. C. Hurdell and M. Joanna Lockie ..	417
Pretty Twin Set for 10-year-old Girl	425
Rural Water Supply Amenities in South Canterbury ..	Eirene E. Unwin ..	427

SUBSCRIPTION RATES

The "Journal" is issued monthly. The subscription within New Zealand is 10s. a year; the overseas subscription is 13s. (sterling). The "Journal" may be ordered from any bookseller or newsagent, or direct from any office of the Department of Agriculture. Individual copies are available from Publications Section, P.O. Box 2298, Wellington, at 1s. a copy, post free.

Subscription inquiries (preferably accompanied by the address cut from a recent "Journal" wrapper) should be sent to the nearest office of the Department of Agriculture.

COPYRIGHT PROVISIONS

Articles in "The Journal of Agriculture" are copyright, but may be reprinted, provided both the "Journal" and author are acknowledged.

The Minister of Agriculture does not accept responsibility for any of the private and trade advertisements included in this publication.

All correspondence relating to the "Journal" should be addressed to the Editor, "The New Zealand Journal of Agriculture", P.O. Box 2298, Wellington.

REGISTERED AT THE G.P.O., WELLINGTON, AS A MAGAZINE.