

Volume 85

Number 2

15 August

1952.

(Established 1910)

NEW ZEALAND JOURNAL OF *Agriculture*

Published by

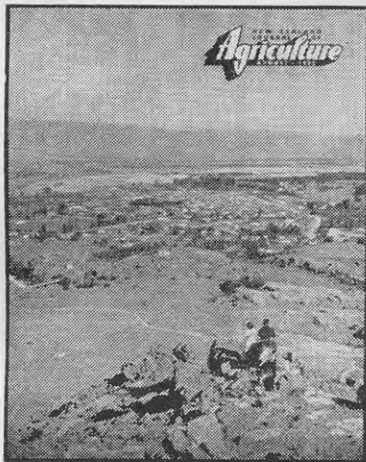
Direction

of

Hon. K. J. Holyoake,

Minister of Agriculture.

This Month's Cover



Alexandra, one of the principal towns of Central Otago, is shown in this month's cover, which has been reproduced from an Ektachrome (Kodak (N.Z.) Ltd.) photograph by T. Lloyd. Established as a gold-digging settlement, Alexandra is now best known for its stone fruit, though a gold dredge still operates there. Irrigation is widely used on the orchards and fat-lamb and dairy farms of Central Otago and the climate favours the production of cereals and small seeds in some parts. Extensive farming, chiefly for wool production, is practised on large areas of tussock and depleted grassland, which are of low carrying capacity. Low rainfall (the average annual fall for Alexandra is 13.22in.) has always been the chief factor limiting farming operations in Central Otago.

New Zealand Department of Agriculture

HEAD OFFICE:

Dominion Farmers' Institute Building,
Featherston Street, Wellington.

DIRECTOR-GENERAL:

E. J. Fawcett

ASSISTANT DIRECTOR-GENERAL:

R. B. Tennent

DIVISIONAL DIRECTORS:

Animal Industry ..	J. E. Mellwaine
Animal Research ..	J. F. Filmer
Dairy ..	H. A. Foy
Extension ..	P. W. Smallfield
Horticulture ..	A. M. W. Greig

Editor: G. J. Neale

TABLE OF CONTENTS

The Menace of Foot and Mouth Disease ..	99
Elevated-bail System of Milking Incorporating Tandem Bail ..	W. G. Batt .. 101
An Easily Handled Field Loader for Bulk Lime ..	C. J. Crosbie .. 105
Hagerdoorn System of Poultry Breeding ..	J. H. Jones .. 107
Management of Glasshouses ..	R. R. White .. 109
Survey Shows Decline in Use of Pampas Grass ..	S. H. Saxby .. 114
Sleepy Sickness and Milk Fever in Ewes ..	J. C. Gerring .. 115
Increased Prices Incentive to More Pig-meat Production ..	A. Longwill .. 119
Rust of Linseed and Linen Flax: Life Cycle and Control ..	I. A. M. Cruickshank .. 123
Shallots: An Easily Grown Crop in Home Garden ..	A. G. Kennelly .. 125
Management of Perching Pullets 127
Pedigree Sow Records 128
Recent Research Work: Wheat 129
Responsibilities of Beekeepers ..	D. Roberts .. 131
Selection of Dairy Herd Replacements ..	G. R. Mackintosh .. 133
Radio Broadcasts 134
Shelter in Citrus Orchards ..	J. E. Hume and F. L. Bailey .. 135
Care of Livestock during September 142
Dairy Produce Graded for Export 142
Spring-sown Crops and Pastures: Drain Maintenance (Seasonal Notes) 143
Farming Potential as Guide to Land Planning ..	R. H. Scott and R. T. du Faur .. 144
Meteorological Records for June 150
The Influence of Hygiene on the Health of Livestock ..	G. V. Wallace .. 151
Types of Farming Practised in New Zealand ..	W. N. Paton .. 159
The Home Garden ..	C. L. Napier .. 161
The Basis of Disease Prevention on the Poultry Farm ..	J. J. Thompson .. 169
Scented Shrubs ..	M. J. Lockie .. 173
A Smart Knitted Jumper in Contrasting Colours 177
Sponge Cakes ..	Molly Macpherson .. 178
The Flower Garden ..	C. K. Ellis .. 183
Pleasanter Ironing Days ..	Maud B. Strain .. 187
Baby's Dress and Matinee Jacket 191

SUBSCRIPTION RATES

The "Journal" is issued monthly. The subscription within New Zealand is 10s. a year; the overseas subscription is 13s. (sterling). The "Journal" may be ordered from any bookseller or newsagent, or direct from any office of the Department of Agriculture. Individual copies are available from Publications Section, P.O. Box 2298, Wellington, at 1s. a copy, post free.

Subscription inquiries (preferably accompanied by the address cut from a recent "Journal" wrapper) should be sent to the nearest office of the Department of Agriculture.

COPYRIGHT PROVISIONS

Articles in "The Journal of Agriculture" are copyright, but may be reprinted, provided both the "Journal" and author are acknowledged.

The Minister of Agriculture does not accept responsibility for any of the private and trade advertisements included in this publication.

All correspondence relating to the "Journal" should be addressed to the Editor, "The New Zealand Journal of Agriculture", P.O. Box 2298, Wellington.

REGISTERED AT THE G.P.O., WELLINGTON, AS A MAGAZINE.