

Volume 84

Number 4

15 April

1952.

(Established 1910)

NEW ZEALAND JOURNAL OF Agriculture

Published by

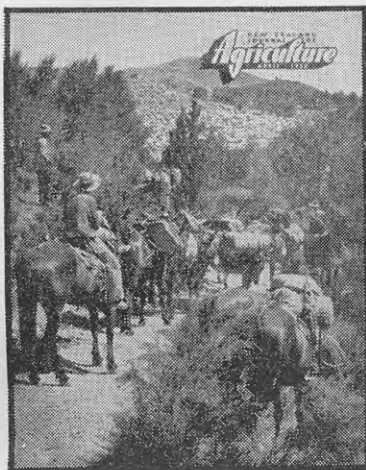
Direction

of

Hon. K. J. Holyoake,

Minister of Agriculture.

This Month's Cover



A pack team consisting of 8 mules following the tail end of the drive on one of New Zealand's remote high-country stations is the subject of this month's cover. It was prepared from a colour print by Perry Photographer of a photograph taken by National Publicity Studios on Bluff Station in inland Marlborough. Bluff Station, which covers a large part of the Kaihōura Range, was abandoned after being devastated by fire during the First World War. Restoration, which has included the killing of large numbers of rabbits, was begun in 1920, since when the land has been painstakingly restored and restocked.

TABLE OF CONTENTS

The International Materials Conference	259
Factors Influencing the Setting and Bearing of Fruit Trees	T. Conway .. 260
Care of Livestock during May	268
Dairy Produce Graded for Export	268
Supplementary Feeding for Cows: Farm Drainage (Seasonal Notes)	269
Buying Laying Birds for a Household Poultry Flock	271
Chemical Methods of Weed Control	L. J. Matthews .. 273
Selection of Breeding Sows within the Herd	A. Longwill .. 281
Winter Show Dates	282
Design for Simply Made Honey Heater	L. H. Johnson .. 283
Meteorological Records for February	284
Fattening, Killing, and Plucking Table Poultry	F. C. Bobby .. 285
Butterfat Production for 1951-52 Expected to be a Record	288
Agricultural Value of Burnt Lime	D. F. Waters .. 289
Spring Oversowing with Clover on Raetihi Hill Country	290
Culture of Feijoa Trees	A. A. Duncan .. 291
Dehorning of Cattle	F. L. Bailey .. 291
Recent Research Work: Weed Control	D. W. Caldwell .. 297
Commercial Vegetable Growing in the Pukekohe District	300
Replacements for Town Supply Dairy Herds	T. C. R. Dawe .. 301
The Home Garden	I. G. Watt .. 305
Basic Slag: Pasture Topdressing in the North Island	C. L. Napier .. 308
Radio Broadcasts	C. During .. 315
Plant Frame for Seedlings	318
Domestic Beekeeping	S. O. Gillard .. 319
Use of Forage Harvester for Stack Silage and Chou Moellier	321
Apricot Culture	J. N. Whyte .. 322
Using Firearms Safely and Skilfully	J. Coombe .. 325
Uses for Aluminium Foil	G. G. Kelly .. 334
Feijoas Have a Variety of Culinary Uses	Norma K. Metson .. 335
Single Bedspreads	Nell Macpherson .. 336
Protecting Wool Materials from Damage by Moths	Molly Macpherson .. 339
The Flower Garden	340
Linoleum-block Printing	341
Catering for a Party Dance	Helen Paine .. 345
	Molly Macpherson .. 349

New Zealand Department of Agriculture

HEAD OFFICE:

Dominion Farmers' Institute Building,
Featherston Street, Wellington.

DIRECTOR-GENERAL:

E. J. Fawcett

ASSISTANT DIRECTOR-GENERAL:

R. B. Tennent

DIVISIONAL DIRECTORS:

Animal Industry	J. E. McIlwaine
Animal Research	J. F. Filmer
Dairy	H. A. Foy
Extension	P. W. Smallfield
Horticulture	A. M. W. Greig

Editor: G. J. Neale

SUBSCRIPTION RATES

The "Journal" is issued monthly. The subscription within New Zealand is 10s. a year; the overseas subscription is 13s. The "Journal" may be ordered from any bookseller or newsagent, or direct from any office of the Department of Agriculture. Individual copies are available from Publications Section, P.O. Box 2298, Wellington, at 1s. a copy, post free.

Subscription inquiries (preferably accompanied by the address cut from a recent "Journal" envelope or wrapper) should be sent to the nearest office of the Department of Agriculture.

COPYRIGHT PROVISIONS

Articles in "The Journal of Agriculture" are copyright, but may be reprinted, provided both the "Journal" and author are acknowledged.

The Minister of Agriculture does not accept responsibility for any of the private and trade advertisements included in this publication.

All correspondence relating to the "Journal" should be addressed to the Editor, "The New Zealand Journal of Agriculture", P.O. Box 2298, Wellington.

REGISTERED AT THE G.P.O., WELLINGTON, AS A MAGAZINE.