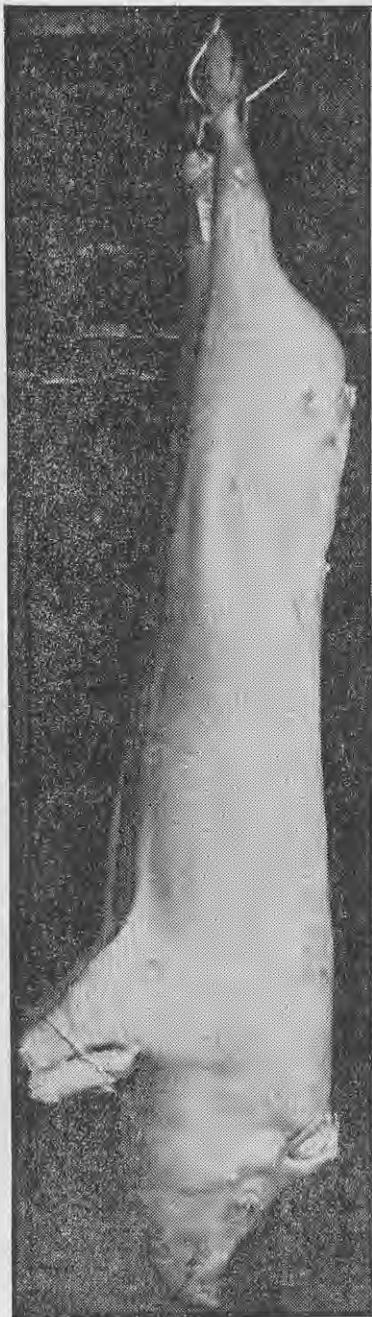


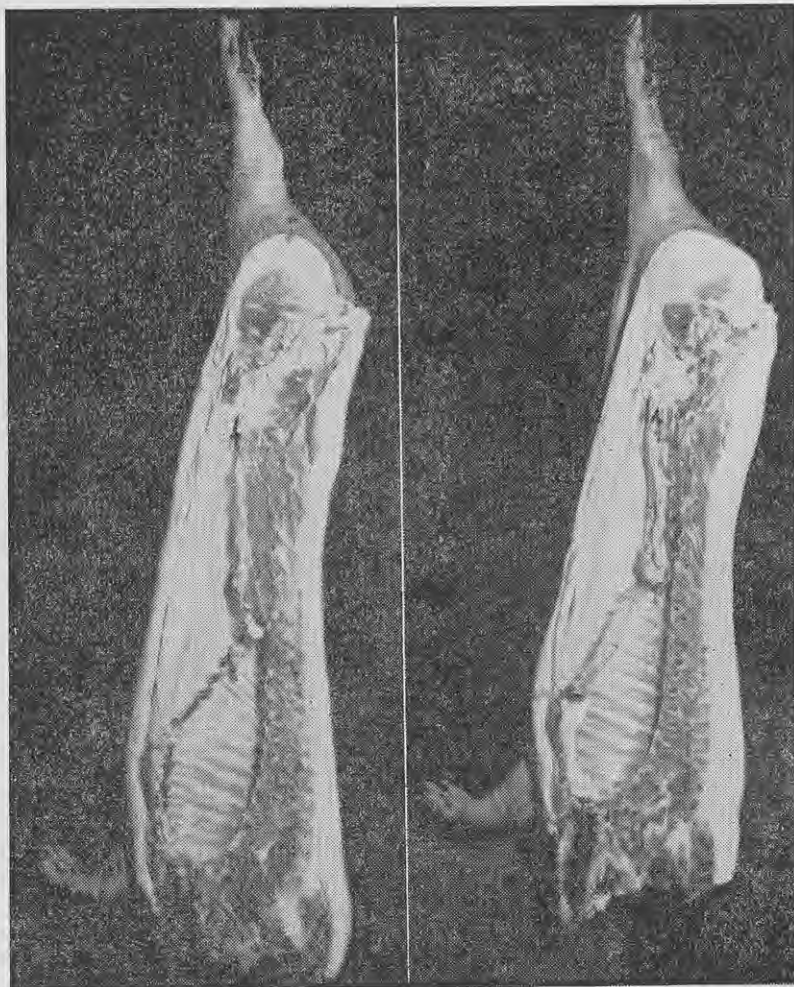
are of a highly specialised bacon type, when they might reach the ideal finish at a little heavier weight and with little, if any, restriction in feeding.

Growth Rate

In the 1950 competitions there was included for the first time a section in which growth rate, up to a maximum of 100 points per team of 4 pigs, was combined with carcass quality in the final assessment. Because of the necessity for restricting feeding to avoid over-fatness in average New



[Sparrow Industrial Pictures Ltd. photo. Ideally balanced carcass.



[Sparrow Industrial Pictures Ltd. photos.

Good side (left) and bad side (right) from carcasses of the same dressed weight (155lb.). The measurements and points scored were:—

POSSIBLE POINTS	GOOD SIDE	BAD SIDE
Length 20	32in. .. 19	30in. .. 11
Depth of side .. 5	12½in. .. 5	12¾in. .. 2
Backfat, loin .. 20	1in. .. 20	1½in. .. 9
Backfat, shoulder 10	1½in. .. 10	2½in. .. 1
Total measurement points .. 55	54	23

Zealand pigs, the coupling of growth rate with carcass quality gives a much more critical test of suitability of pigs for baconer production. From the farmer's point of view, though it is important to have a high standard of carcass quality so that demand for the

product will be maintained, the product must be produced at a profit. To indicate how this critical test works the following table has been drawn up to include all teams in this section which scored 70 per cent. of points in total or for carcass only.

TABLE 11—PERFORMANCE OF BEST TEAMS IN GROWTH-RATE SECTION

		Date of birth	Av. d. wt. gain per day lb.	Carcass Points (max. 420)	points % of poss.	Total points	
						Points (max. 520)	% of poss.
Ruakura A.R.S.	2/12/49	.88	329	78	405	78
New Plymouth Boys' High School	25/6/49	.74	329	78	377	72.5
J. W. Wilson	25/10/49	.89	289	69	367	71
New Plymouth Boys' High School	1/8/49	.68	320	75	356	68
D. G. Bell	4/11/49	.72	309	74	353	68
R. Julian	13/11/49	.70	303	72	343	66
J. G. Fowell	22/11/49	.67	304	72	338	65
A. J. Dixon	20/9/49	.72	292	70	336	65
Risi Bros.	4/9/49	.65	306	73	336	65
Risi Bros.	15/6/49	.70	284	70	334	64
Greig Estate	17/8/49	.58	298	71	314	60

All these teams were Large White or by Large White sires. The teams placed 6th, 8th equal, and 10th were whey fed.