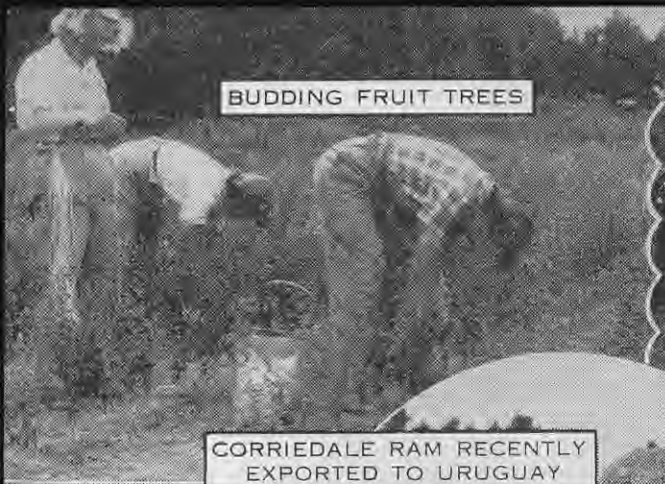


CANTERBURY AGRICULTURAL COLLEGE, LINCOLN

BUDDING FRUIT TREES



CORRIEDALE RAM RECENTLY EXPORTED TO URUGUAY



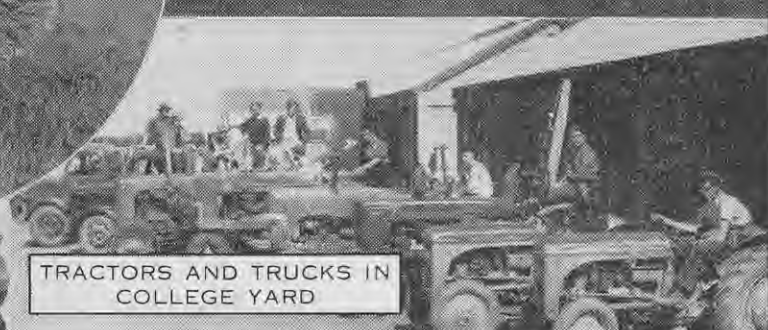
BUILDINGS, GARDENS, AND SPORTS GROUNDS



EXAMINATION OF SOILS



TRACTORS AND TRUCKS IN COLLEGE YARD



Opened in July, 1880, Lincoln College provides diploma courses in agriculture, horticulture, and valuation and farm management and degree courses in agriculture and horticulture. On the college farm of 1264 acres and the Ashley Dene farm of 878 acres, a wide variety of crops and pastures is grown and many breeds of sheep, cattle, and pigs maintained. Research into agricultural problems has always been a major activity. Probably the most important work of the college in 70 years of service to farming has been the teaching and fostering of good husbandry.

Aerial photograph by V. C. Browne.

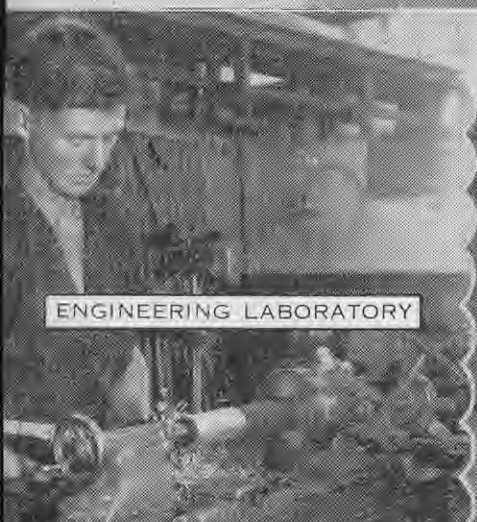
TEAM RETURNING FROM WORK



PLOUGHING FOR PEAS



ENGINEERING LABORATORY



SETTING A PLOUGH

