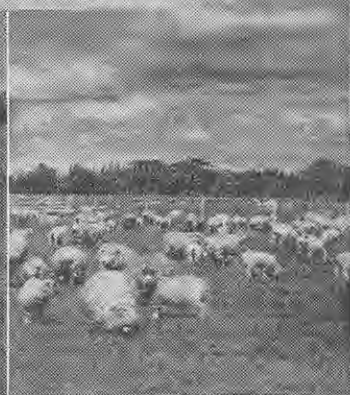
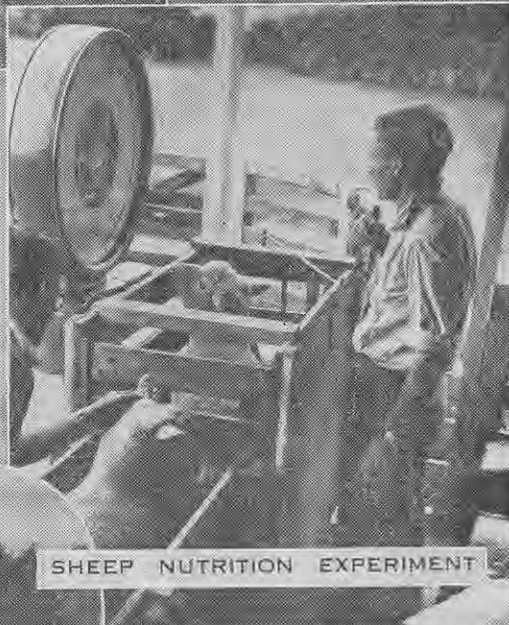


RUAKURA ANIMAL RESEARCH STATION

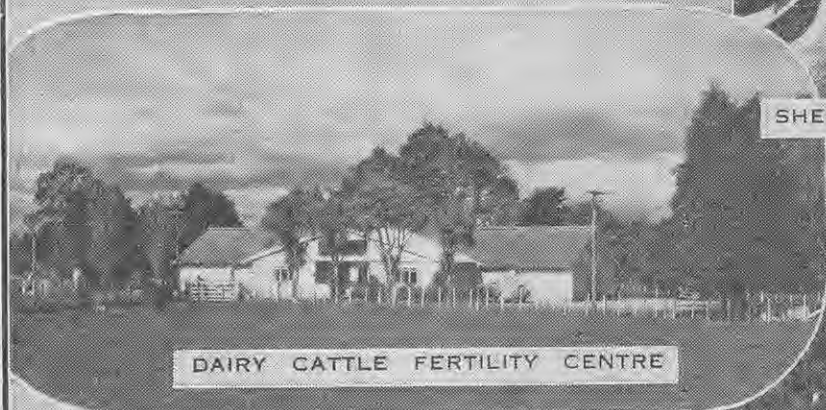


CONTROLLED VERSUS UNCONTROLLED GRAZING

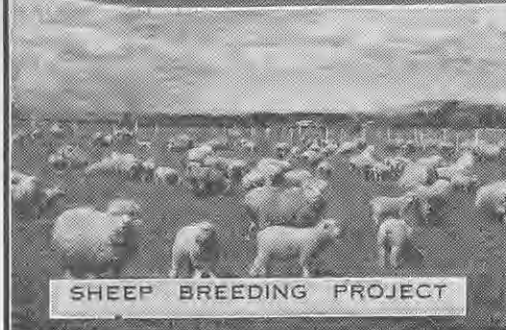
The Department of Agriculture Animal Research Station, Ruakura, is concerned primarily with problems affecting the productive efficiency of farm animals. Therefore, the work at the station is loosely divided into five main sections: Animal breeding, animal nutrition, animal fertility including artificial insemination, general biology including specialised studies of meat production, milk secretion, and endocrinology, and biochemistry with special reference to animal nutrition, animal metabolism, photosensitivity diseases, and toxicology. Much information has already been obtained which, if put into general farm practice, would increase productive efficiency.



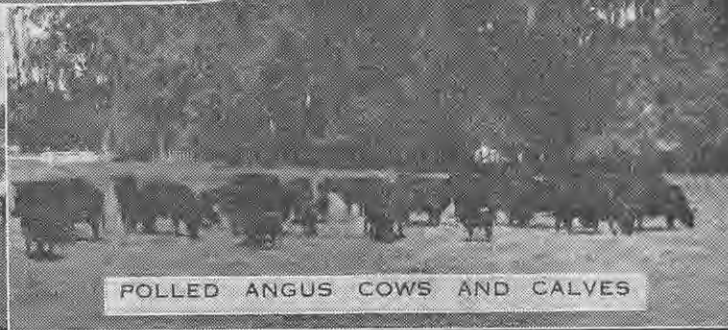
SHEEP NUTRITION EXPERIMENT



DAIRY CATTLE FERTILITY CENTRE



SHEEP BREEDING PROJECT



POLLED ANGUS COWS AND CALVES