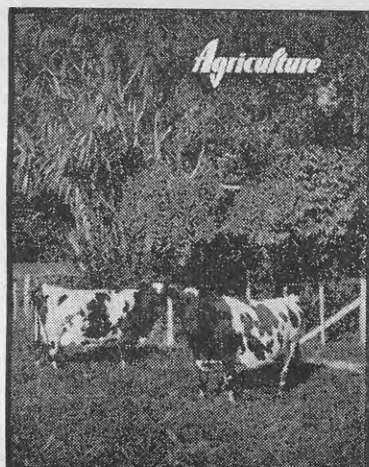


Volume 81  
 Number 3  
 September 15,  
 1950.  
 (Established 1910)

# NEW ZEALAND JOURNAL OF *Agriculture*

Published by  
 Direction  
 of  
 Hon. K. J. Holyoake,  
 Minister of Agriculture.

## This month's cover



A set of identical twin cows at the Ruakura Animal Research Station of the Department of Agriculture is the subject of this month's cover, which has been reproduced from a natural-colour photograph by National Publicity Studios. Identical twins have provided the research worker with a tool which promises to lead to more accurate information about cattle than any research method hitherto available to him. The Ruakura work with identical twins should be as closely watched by dairy farmers in New Zealand as it is by leading dairy scientists overseas.

## TABLE OF CONTENTS

The Value of Animal Research to the Farmer .. .. .	195
Care of Livestock during October .. .. .	196
Methods of Marking Lambs and Precautions to be Observed .. .. .	A. D. M. G. Laing .. 197
Recent Patent Specifications for Farming Inventions .. .. .	202
Radio Broadcasts .. .. .	202
Transparent Plastic Tubing Found Unsuitable for Milking Machines .. .. .	W. G. Batt and W. G. Whittleston .. 203
Beekeeping in Taranaki .. .. .	L. H. Johnson .. 205
Meteorological Records for July .. .. .	208
Farming in New Zealand: Gisborne-East Cape District .. .. .	A. A. Duncan .. 209
Device for Holding Fowls during Blood Testing .. .. .	A. C. Howse .. 223
Primary Production Monthly Review .. .. .	224
The Place of Chou Moellier in Mid-Canterbury Farming .. .. .	R. Inch .. 225
Design and Construction of Sheep-drafting Yards .. .. .	J. E. Duncan .. 227
Quick and Effective Method of Fencing off Haystacks .. .. .	A. V. Allo .. 240
Systems of Pig Feeding and Management in New Zealand .. .. .	I. H. Owtram .. 241
Dairy Produce Graded for Export .. .. .	242
Use of Meals with Whey as Pig Food is Still Profitable .. .. .	E. D. Edwards .. 243
The Home Garden .. .. .	S. O. Gillard .. 244
Household Poultry .. .. .	W. L. McIver .. 253
By-products of the Meat Freezing Industry .. .. .	I. B. Chisholm .. 257
Root and Green Forage Crops .. .. .	267
Show Dates .. .. .	268
Domestic Beekeeping .. .. .	R. Goddard .. 269
Bedding Plants for Early-spring Display .. .. .	H. P. Thomas .. 270
The Flower Garden .. .. .	C. K. Ellis .. 271
A for Asparagus .. .. .	Eva Topping .. 275
Denman, the English Country Women's College .. .. .	Norma K. Metson .. 279
A Quickly and Easily Made Nightgown .. .. .	Eva Topping .. 281
How to Deal with a Chimney Fire in the Farm Home .. .. .	Eirene E. Unwin .. 283
The Museums of New Zealand .. .. .	Enid B. V. Phillips .. 285

## New Zealand Department of Agriculture

### HEAD OFFICE:

Dominion Farmers' Institute Building,  
 Featherston Street, Wellington.

### DIRECTOR-GENERAL:

E. J. Fawcett

### ASSISTANT DIRECTOR-GENERAL:

R. B. Tennent

### DIVISIONAL DIRECTORS:

Animal Research .. .. .	J. F. Filmer
Dairy .. .. .	H. A. Foy
Extension .. .. .	P. W. Smallfield
Horticulture .. .. .	A. M. W. Greig
Livestock .. .. .	J. E. McIlwaine

Editor: G. J. Neale

### SUBSCRIPTION RATES

The "Journal" is issued monthly. The subscription within New Zealand is 2s. 6d. a year; the overseas subscription is 5s. The "Journal" may be ordered from any bookseller or newsagent, or direct from any office of the Department of Agriculture. Individual copies are available from Publications Section, P.O. Box 3004, Wellington, at 3d. a copy, post free.

### COPYRIGHT PROVISIONS

Articles in "The Journal of Agriculture" are copyright, but may be reprinted, provided both the "Journal" and author are acknowledged.

The Minister of Agriculture does not accept responsibility for any of the private and trade advertisements included in this publication.

All correspondence relating to the "Journal" should be addressed to the Editor, "The New Zealand Journal of Agriculture," P.O. Box 3004, Wellington.

Subscription inquiries (preferably accompanied by the address cut from a recent "Journal" envelope) should be sent to the nearest office of the Department of Agriculture.

REGISTERED AT THE G.P.O., WELLINGTON, AS A MAGAZINE.