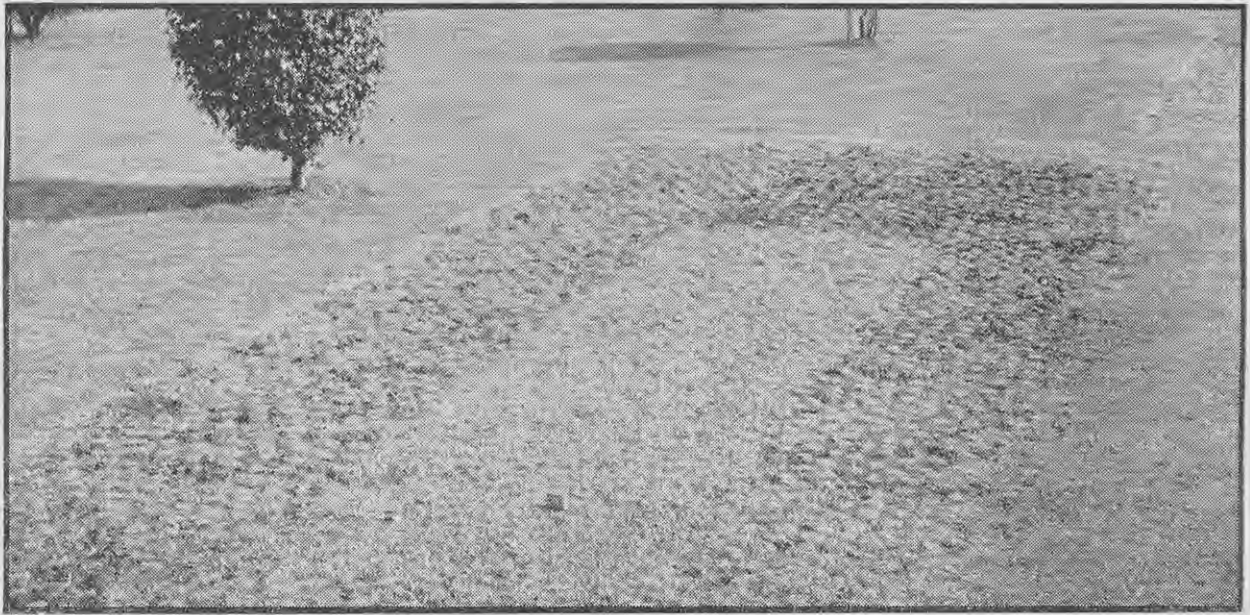


MERCURY BAY WEED AS A LAWN PLANT



Showing the method of gradual conversion from ordinary grass to a Mercury Bay weed lawn.

[Sparrow Industrial Pictures Ltd. photo.]

lawn. They do, however, make more frequent mowing necessary if they become strongly established. Fortunately, the finer grasses do not have much chance of growing in a dense mat of Mercury Bay weeds, and will not be troublesome if the ground is carefully prepared before planting time.

Mowing

A well-kept lawn of Mercury Bay weed needs very little mowing, but should be cut occasionally to keep the surface neat and level. Growth is

very slow between the end of March and early September and the lawn may require no mowing in those months. During the warmer months, especially if rainfall is plentiful, growth is comparatively rapid, with the inevitable result that the lawnmower will have to be used five or six times during that period.

Although this plant thrives in rather dry, sunny situations, and remains green through fairly long dry spells, an occasional watering may be necessary to maintain its bright and fresh appearance.

Renovation of Old Lawns

After a few years there may be signs of the plants "running out" in patches. Usually these patches will show first where the original plugs were set, the younger growth remaining healthy. Replanting the weak patches with plugs from healthy parts of the lawn will remedy the fault.

Mixed Lawns

Some very successful mixed lawns of Mercury Bay weed and good lawn grasses are to be seen in the Auckland district. Most of these have been grass lawns in which plugs have been set without disturbing the grass.

If this type of lawn is desired, the best time to set the plugs is late spring or early summer as soon as spring growth of the lawn grasses slows down in the drier and hotter weather. The Mercury Bay weed then has several months in which to become firmly established before the autumn flush of growth gives the grasses another temporary period of supremacy before the semi-dormant winter period.

Mixed lawns need about the same amount of mowing as do grass lawns, but they remain much greener during the dry summer months. For those who value lawn clippings the mixed lawn has the advantage that it provides a supply of this material.

Mercury Bay weed will not dispose of all the problems and work associated with garden lawns, but given the attention it merits, it will, in the warmer parts of New Zealand, give year-round greenness under conditions too dry for the usual lawn grasses.

Reference

"Construction, Renovation and Care of the Bowling Green," by E. Bruce Levy.

DAIRY PRODUCE GRADED FOR EXPORT

THE following figures showing quantities of dairy produce graded for export during June and for the 11 months ended June 30, 1950, with comparative figures for the same month and 11-monthly period of 1949, have been compiled by the Dairy Division of the Department of Agriculture from figures supplied by divisional officers at the various grading ports:—

BUTTER—

Period	Creamery	Tons Whey	Total	Percentage inc. or dec.	Tons Total in store at end of mth.
June, 1950	740	36	776	—	6,198
June, 1949	1,053	28	1,081	—	13,698
Increase or decrease	-313	-8	-305	-28.214	-7,500
For 11 months ended 30/6/50	141,175	2,900	144,075	—	—
For 11 months ended 30/6/49	142,182	2,633	144,815	—	—
Increase or decrease	-1,007	+267	-740	-0.510	—

CHEESE—

Period	White	Tons Coloured	Total	Percentage inc. or dec.	Tons Total in store at end of mth.
June, 1950	1,386	63	1,449	—	17,654
June, 1949	1,346	110	1,456	—	11,653
Increase or decrease	+40	-47	-7	-0.480	+6,001
For 11 months ended 30/6/50	78,656	21,572	100,228	—	—
For 11 months ended 30/6/49	89,438	5,163	94,601	—	—
Increase or decrease	-10,782	+16,409	+5,627	+5.948	—

If these figures are converted into butterfat equivalent, there is an increase of 0.879 per cent. in butterfat graded for the 11 months as compared with the corresponding period of the preceding season. It should be noted that the above figures refer only to butter and cheese graded for export, and that owing to diversions which may take place from time to time, they are not necessarily a true indication of production trends.