

Volume 81

Number 2

August 15,

1950.

(Established 1910)

NEW ZEALAND JOURNAL OF Agriculture

Published by

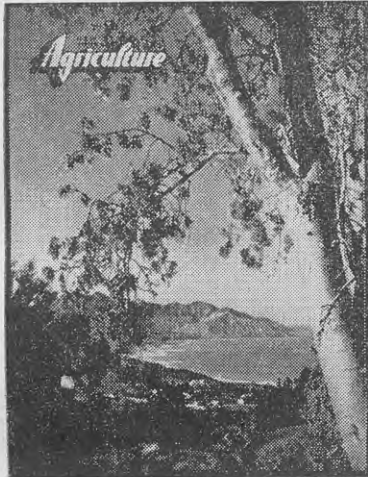
Direction

of

Hon. K. J. Holyoake,

Minister of Agriculture.

This month's cover



Flowering kowhai at Waipiro Bay is the subject of this month's cover, which has been reproduced from a natural-colour photograph by National Publicity Studios. Unusually colourful among native trees, the kowhai flowers in early spring in northern districts, a feature of the species being that it is deciduous and the flowers appear before the leaves. Waipiro Bay is 69 miles north-east by road from Gisborne and is one of the settlements of the extensive sheep farming area around East Cape, most of which was developed from heavy bush, pastures being surface sown after the trees had been felled and burnt.

TABLE OF CONTENTS

Efficiency and Quality in Agriculture	99
Care of Livestock during September	100
Improving Strains of Bees by Artificial Insemination	T. Palmer-Jones and G. E. Miller 101
Mercury Bay Weed as a Lawn Plant	W. S. Kemp 109
Dairy Produce Graded for Export	112
Seeding Rates for Pastures on Ploughable Land in Auckland Province	J. E. Bell 113
A <i>Glyceria aquatica</i> Stand	K. M. Montgomery 116
Radio Broadcasts	116
Electric Water Heaters in Milking Sheds	R. Grice 117
The Home Garden	S. O. Gillard 119
Effect of Removal of Runners from Strawberry Plants	A. H. Eddie 126
Book Review: "Farming in New Zealand"	W. N. Perry 127
Primary Production Monthly Review	128
Design and Construction of Sheep-drafting Yards	J. E. Duncan 129
Variiegated Thistle and its Control	A. R. Dingwall 141
Recent Patent Specifications for Farming Inventions	142
Household Poultry	W. L. McIver 143
Meteorological Records for June	144
Pasture Management and Crop Production	145
Systems of Pig Feeding and Management in New Zealand	I. H. Owtram 147
Crop and Pasture Competitions, 1949	151
Methods of Controlling Poultry Parasites	J. J. Thompson 155
Domestic Beekeeping	R. Goddard 163
Bedding Plants for Summer and Autumn Display	H. P. Thomas 164
The Flower Garden	C. K. Ellis 165
Appetising and Nutritive Dishes Made with Eels	Nell Macpherson 173
Making Sleeves	Edith G. McNab 177
Saving Electricity in the Home	Dorothy Johnson 181
The Museums of New Zealand	Enid B. V. Phillips 185
Lunches to be Packed and Carried	Evelyn E. Moore 189
Toast that is Different	Evelyn E. Moore 192

New Zealand Department of Agriculture

HEAD OFFICE:

Dominion Farmers' Institute Building,
Featherston Street, Wellington.

DIRECTOR-GENERAL:

E. J. Fawcett

ASSISTANT DIRECTOR-GENERAL:

R. B. Tennent

DIVISIONAL DIRECTORS:

Animal Research	J. F. Filmer
Dairy	H. A. Foy
Extension	P. W. Smallfield
Horticulture	A. M. W. Greig
Livestock	J. E. McIlwaine

Editor: G. J. Neale

SUBSCRIPTION RATES

The "Journal" is issued monthly. The subscription within New Zealand is 2s. 6d. a year; the overseas subscription is 5s. The "Journal" may be ordered from any bookseller or newsagent, or direct from any office of the Department of Agriculture. Individual copies are available at 3d. a copy, post free.

COPYRIGHT PROVISIONS

The articles in the "Journal" of the Department of Agriculture of New Zealand are copyright. Proprietors of newspapers and periodicals wishing to republish matter are at liberty to do so, provided both the "Journal" and author are acknowledged.

The Minister of Agriculture does not accept responsibility for any of the private and trade advertisements included in this publication.

All correspondence relating to the "Journal" should be addressed to the Editor, "The New Zealand Journal of Agriculture," Box 3004, Wellington.

REGISTERED AT THE G.P.O., WELLINGTON, AS A MAGAZINE.