

A SMOCKED FROCK FOR A SMALL GIRL

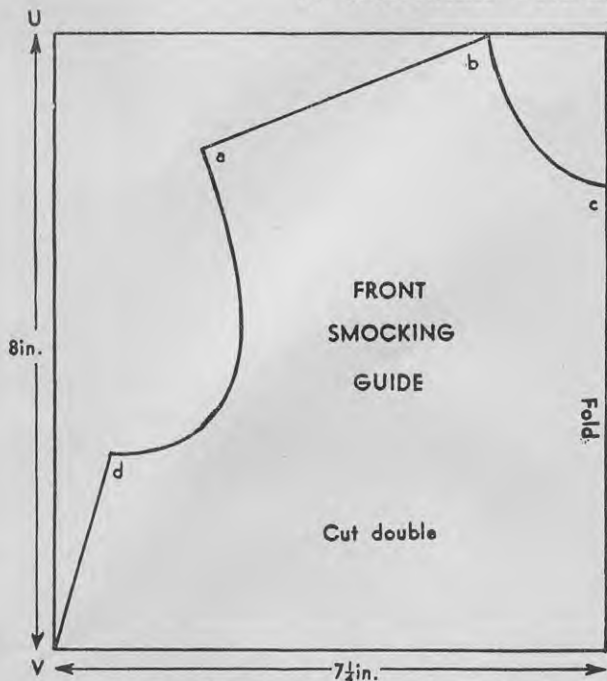


Fig. 6—Dimensions of the smocking guide.

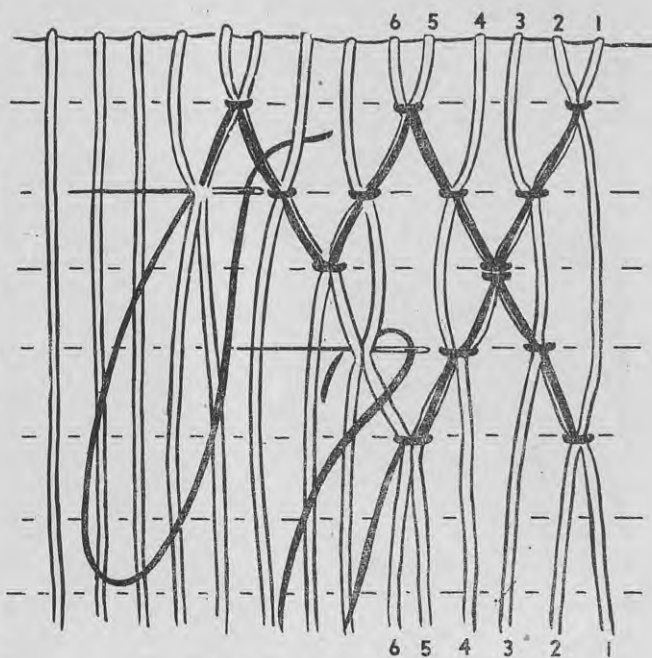


Fig. 8—Details of the smocking stitches.

These five pieces are the paper pattern from which the frock will be cut, but one more piece is required—the smocking guide for the front. It should be cut from fairly stiff paper and must be cut whole, not in halves as for the pattern.

Smocking Guide (Fig. 6)

Size of paper $14\frac{1}{2}$ in. x 8 in., folded in halves along the long sides; mark the two open corners on the left side U and V.

From U measure 2 in. toward the fold and down $1\frac{1}{2}$ in.; mark a. From U measure $5\frac{1}{2}$ in. toward the fold and mark b. Join a and b for the shoulderline.

From the top edge at the fold measure down 2 in. and mark c. Join b and c with a curve for the neckline.

From V measure $2\frac{1}{2}$ in. toward U and $\frac{1}{2}$ in. in; mark d. Join d to V for the side seam.

Join a and d in a curve as shown for the armhole.

Mark the piece "Front smocking guide" and cut it out folded to make the sides symmetrical.

Turnings of $\frac{1}{8}$ in. are allowed in the pattern on all seams except the back yoke at the fastening edge, where the allowance is only $\frac{1}{4}$ in. The pattern allows for a hem of $2\frac{3}{4}$ in. with a $\frac{1}{2}$ in. turning.

Cutting out the Frock

Set the pattern out on the material as in Fig. 7, making sure that the centre front and centre back are on the fold. Cut four yoke pieces, two being the linings. Two lengths 22 in. x 2 in. for the tie belts are also needed.

Place the collar pattern on the contrasting material so that the grain runs either lengthwise or crosswise.

Front Smocking

Lay the other pieces aside and take up the front of the frock. Run rows of gathering stitches across the front with the stitches about $\frac{1}{2}$ in. apart and the rows $\frac{1}{2}$ in. below each other. Keep the stitches even in length and the pleats formed regularly. When the pattern of the material is conveniently spaced, as in small checks, a transfer

may not be necessary, but if one is wanted, use small-sized smocking dots, stamp them on the wrong side of the material, and make the running stitches on the wrong side too.

Make about 22 rows of stitching to attain a bodice effect for about $5\frac{1}{2}$ in. from the centre front neckline when finished. Start with the full-length row just below the neckline; the short rows on each shoulder can be put in afterward. Continue the stitches for the required depth. Take a length of thread for each row and leave the ends hanging free.

Next gather round the front neck and the front shoulders. Tack the front smocking guide to the back of the dress front, pull up the neck and shoulder gathers to fit the guide, and fasten them off firmly. Pull the loose threads through to the right side, insert a pin for every two rows, pull up the gathers to fit the smocking guide, and wind the threads round the pins. Pull the pleats gently from top to bottom to make them lie evenly.

Take three strands of stranded embroidery cotton in the needle and proceed as follows:—

First Row of Stitching

Insert the needle at the right-hand side of the work on the first long row of gathers. Take up the first two pleats and make a back stitch over both.

Take up the second and third pleats of the 2nd row and make a back stitch over both.

Take up the third and fourth pleats of the 3rd row and make a back stitch over both.

Take up the fourth and fifth pleats of the 2nd row and make a back stitch over both.

Take up the fifth and sixth pleats of the 1st row and make a back stitch over both.

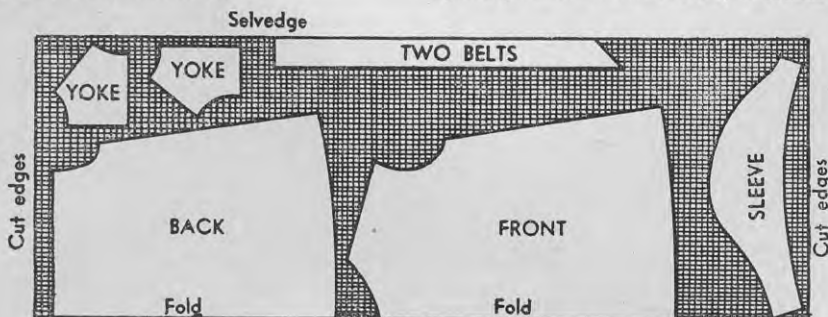


Fig. 7—Layout for pattern pieces on $1\frac{1}{8}$ yds. of 36 in.-wide material.