

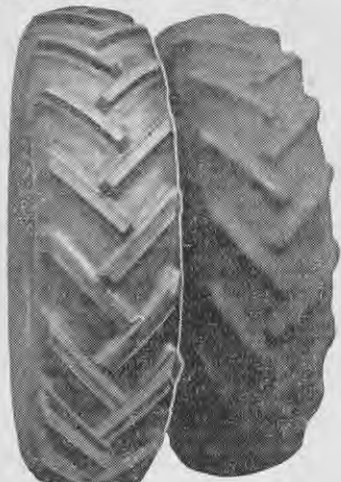
KEEP THE WHEELS TURNING

Speed Railway Wagons Speed Production

In its response to the demands for still more produce, industry places a heavier load upon the Railways. Rapid transport is vitally necessary in order that the Dominion's domestic needs may be met and that the Mother Country also shall have the fullest benefit from our drive for increased production. Help maintain the drive by quickly releasing railway wagons and tarpaulins. They are required elsewhere. Delay in unloading impedes the national effort.

Collect Consignments Quickly

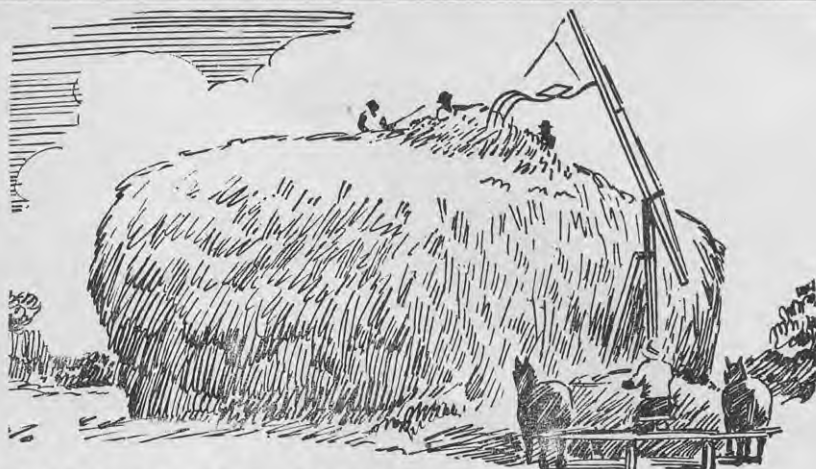
FINISHED JOB BEFORE



TRACTOR OWNERS

Don't waste power, fuel and time, have your tractor tyres re-lugged and made equal to new, by latest American plant. All work guaranteed. Twelve months' operations have proved the efficiency of re-lugging by specialists—at half the cost of new tyres. . . . Think of the saving. Contact your nearest garage for service or direct to Factory.

INDUSTRIAL GROUND GRIP LTD.,
Hornby, Christchurch.



HOW WILL IT OPEN UP?

Ask
your
Produce
Merchant
for

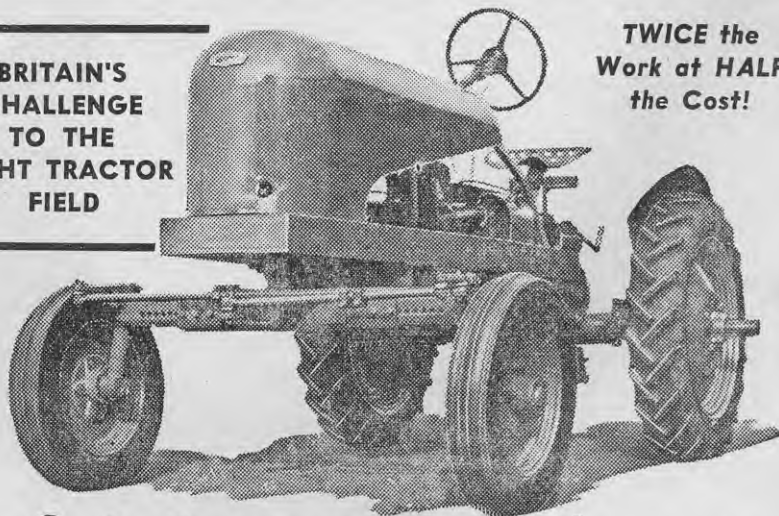
You can enrich your hay and make sure it opens up next season in first-class condition by using TOMOANA HAYSTACK MIXTURE. TOMOANA HAYSTACK MIXTURE is a molasses-salt-mineral mixture, specially made as a crumbly meal for easy handling of the molasses. It is simply thrown on, layer by layer, as the stack is built. The mixture works in two ways. Not only does it give a good "cure" to the whole bulk of the hay, but it also forms part of the molasses diet in winter when hay is normally fed out.

TOMOANA HAYSTACK MIXTURE

For further information write to W. & R. FLETCHER (N.Z.) LTD., Box 663, Wellington.

BRITAIN'S
CHALLENGE
TO THE
LIGHT TRACTOR
FIELD

TWICE the
Work at HALF
the Cost!



Newman

(Petrol or Diesel)

BRITISH LIGHTWEIGHT TRACTOR

AUTHORISED NEWMAN DISTRIBUTORS.

AUCKLAND: Farmers' Trading Co. Ltd. DARGAVILLE: Pinkers Garage Ltd. WHANGAREI: Paine Bros. (North Auckland) Ltd. KAIKOHE: Paine Bros. (Kaikohe) Ltd. THAMES: W. Judd, Pollen St. MORRINSVILLE: Burmester & Armstrong Ltd. ROTORUA: T. D. Webster & Co. TAURANGA: Robbins Machinery Co. Ltd. FRANKTON: Browns Machinery. NEW PLYMOUTH, STRATFORD, HAWERA: L. H. Johnson Motors. HASTINGS: Turners (Hawke's Bay) Ltd. CHRISTCHURCH and RANGIORA: Skillings Implements Ltd. DUNEDIN: Reilly's Central Parking Station Ltd. OAMARU: Swinard Bros. Ltd. INVERCARGILL: Gormack, Wilkes, Davidson Ltd. DANNEVIRKE: Dannevirke Machinery Exchange. GISBORNE: Farm Implement Supplies. WANGANUI: Linwood Motors Ltd.