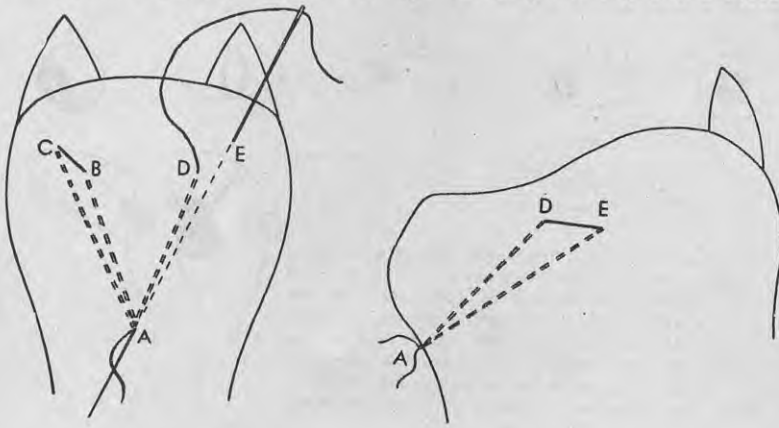


Needle Modelling to give a Cat Eye Sockets, a Smile, and a Nose



Stage 1—Pass the needle from A to B, on the surface from B to C, then back to A. Pull the ends tight and knot them at A. Repeat from A to D, to E, and back to A.

Mouths and Noses: Sometimes the modelling can be extended to the mouth as well as to the eyes. The illustration shows how a smiling cat's face may be made with stitches from the mouth to the eyes and back again. A little practice with this sort of thing should enable the toy maker to create delightful expressions on her animals, but the toys should smile, if possible, and not look fierce or sad. Making the corners of the mouth turn up helps the smile. Even if the animal's mouth tends to droop like a rabbit's, the very tips should turn up or the effect will not please a child. Both sides of the mouth should be exactly alike or the expression will be sarcastic. Holding a face up to a mirror helps to check whether both sides have been made alike.

Mouths may be embroidered or appliqued. Shapes for several different animals are illustrated. A dog looks well with an open mouth and a lolling tongue; the mouth is drawn open, a shaped mouth gusset sewn in similarly to the head gusset, and a red tongue added.

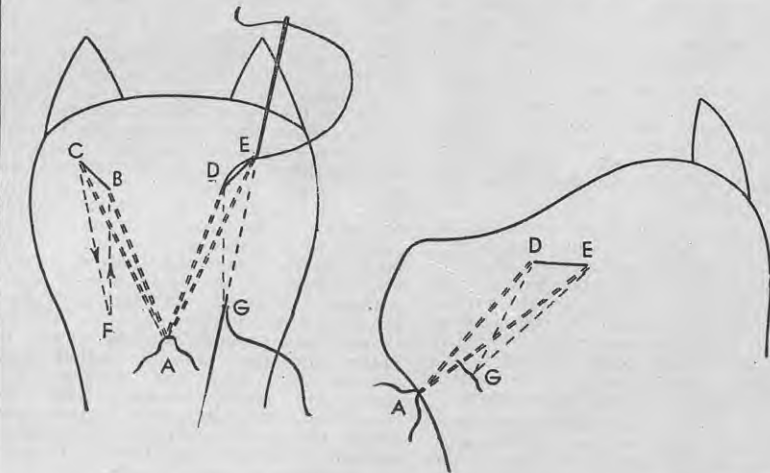
Ears

Whatever material the toy may have been made of, felt is almost always suitable for ears, as it stands up well.

Several typical ears are shown. A horse's ear is folded edges to middle before being sewn in. Dogs usually have theirs folded in halves, double edges forward, and put in with the head gusset. Cats' ears are not put in the head gusset seam but are sewn directly to the head, or through a slit cut for them, along a curve. The worker's thumb may give the right curve if the ear is bent round it. Elephants' ears are sewn facing forward and then folded back and caught with a few invisible stitches.

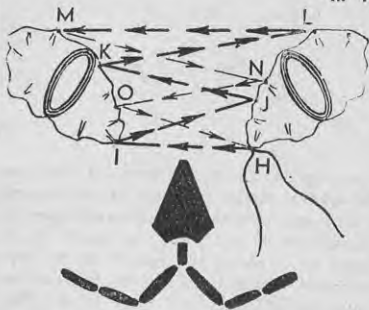
If the ears are big and are to be very stiff, they should be cut double and perhaps even given a stiff interlining. Seam allowances will be necessary and the two or three thicknesses must be machined, right sides together, all round the outside edge except across the base. Then the seam allowances are clipped and the ear turned right side out before being sewn into place. A white rabbit may be given a pink lining to its ear in this way. Sometimes a felt front or back will give sufficient stiffening without an interlining.

For felt animals only, ears not put in with the head gusset seam may be pushed through shaped cuts in the sides of the head and stitched firmly on the inside before the head is sewn up. The worker must be very sure of the correct pattern line, as normally ears should not be put on until the animal has been stuffed or they may turn out to be in the wrong place. However, with small felt animals the stuffing usually does not alter the shape sufficiently for there to be any danger of the ears being wrong if they are put in before or while the head is being sewn up. Ears put through cuts in the head may be sloped forward or backward. An extra seam allowance is necessary on the base of the ear piece, and this is shown on some of the pattern pieces. Cloth-



Stage 2—Pass the needle from F to B, on the surface from B to C, then back to F. Pull the ends tight and knot them at F. Repeat from G to D, to E, and back to G. The double dotted lines are the stitches of stage 1.

Stage 3—Sew on the eyes. To make it bulge, a felt eye may be cut a little too big, gathered along the lower edge, and stuffed from behind while being sewn on. The pupil should be embroidered on with coarse thread and a light high light put in the middle.



Stage 4—Modelling the nose. Start at H, leaving an end, thence to I, J, K, L, and M, always through the nose, and finally back to H via N and O. Make the smallest stitches possible on the surface. Pull the threads tight, tie the ends at H, and catch them beneath the eye. If necessary, begin modelling lower down the nose than H. With some modification this nose modelling can be used for other animals as well as cats.

Stage 5—To complete the face, applique on a brown velvet nose, embroider the mouth with large backstitches, couch a thick double thread round the eyeball to make lids and hide the gathered edge of the felt, and sew on whiskers.