

GROW PEAS on Contract

Plan now for next season's area and be certain of obtaining the highest prices with no risk of markets. Some peas may be difficult to sell but by contracting with Yates you can be certain of price and disposal. Grow Peas that suit your land—our experts will advise the right variety. Sow seed produced by a New Zealand Seed Firm for New Zealand Conditions—maximum yields. Highest prices and an assured market; no gamble—prompt payout.

ALL GARDEN TYPES
AVAILABLE

ARTHUR YATES
& Co. Ltd.
AUCKLAND and
CHRISTCHURCH

See your nearest representative early—

AUCKLAND: Head Office. Box 1109.
GISBORNE: Common Shelton & Co., Ltd.

HASTINGS: Turners (H.B.) Ltd.

BLLENHEIM: A. Yates & Co. Ltd., Branch Office.

CHRISTCHURCH: A. Yates & Co. Ltd., Manchester Street.

OTAGO: Chas. E. Wallington, Omakau (phone 61C); alternative address: 19 Granville Terrace, Belle Knows, Dunedin. Phone 21-746.

SOUTHLAND & WAKATIPU: D. W. Thompson, Queenstown. Box 91. Tel. 42M.

Newman (Petrol or Diesel)

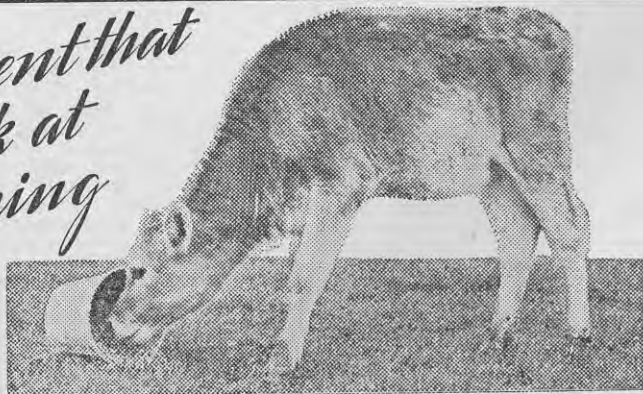
BRITISH LIGHTWEIGHT TRACTOR
Cuts Costs to Ribbons!



AUTHORISED "NEWMAN" LIGHTWEIGHT TRACTOR DISTRIBUTORS:

AUCKLAND: Farmers Trading Co. Ltd. DARGAVILLE: Pinkers Garage Ltd. WHANGAREI: Paine Bros. (North Auckland) Ltd. KAIKOHE: Paine Bros. (Kaikohe) Ltd. THAMES: W. Judd, Pollen Street. MORRINSVILLE: Burmester & Armstrong Ltd. ROTORUA: T. D. Webster & Co. TAURANGA: Robbins Machinery Co. Ltd. FRANKTON: Browns Machinery. NEW PLYMOUTH, STRATFORD, HAWERA: L. H. Johnson Motors. HASTINGS: Turners (Hawkes Bay) Ltd. CHRISTCHURCH and RANGIORA: Skillings Implements Ltd. DUNEDIN: Reillys Central Parking Station Ltd. OAMARU: Swinard Bros. Ltd. INVERCARGILL: Gormack, Wilkes, Davidson Ltd. DANNEVIRKE: Dannevirke Machinery Exchange. GISBORNE: Farm Implement Supplies. WANGANUI: Linwood Motors Ltd.

*Prevent that
check at
weaning*



with

TOMOANA

Calf Pellets

NO CHECK AT WEANING is the rule where calves are being fed on TOMOANA CALF PELLETS.

Containing linseed meal, fish meal, meat meal and selected cereal meals, TOMOANA CALF PELLETS can be fed dry, and in this way the calf's digestive organs become more easily accustomed to solids.

The effect of weaning is cushioned by the concentrated food of TOMOANA CALF PELLETS, so that the calves will grow steadily and without check into robust and sturdy yearlings.

For further information write to:— Nutrition Advisory Department,
W. & R. FLETCHER (N.Z.) LTD. BOX 663 WELLINGTON