

Here it is!

The Celebrated
REID & GRAY
3-Furrow

"SILVER" "SILVER" PLOUGH PLOUGH

NOW available for
Direct Mounting on
**FORDSON MAJOR
TRACTORS**

- Hydraulically lifted in full suspension on the tractor.
- Retains all the traditional R. & G. features.
- Standard full-size R. & G. No. 5 Mouldboards.
- Adjustable furrows, 9in. to 12in.
- Three Furrow quickly convertible to Double Furrow.

Send today for Free Leaflet, or see your nearest Reid & Gray Agent.

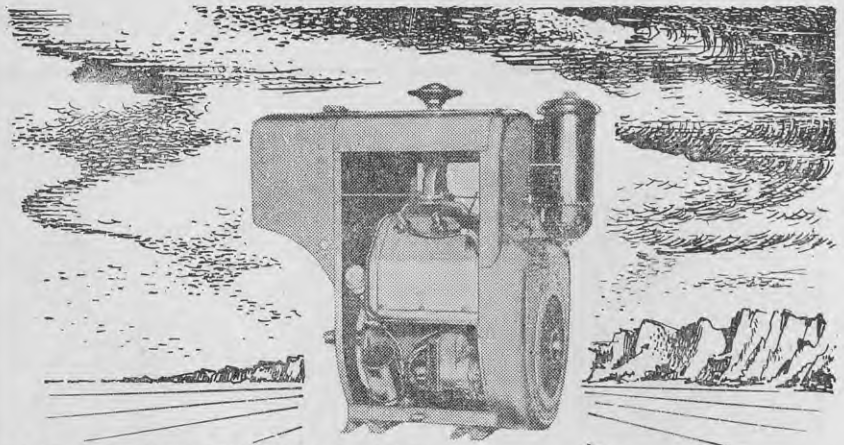
REID & GRAY LTD.

Head Office and Works:
BURNSIDE, OTAGO.

Branches at **INVERCARGILL, GORE**
and **BALCLUTHA.**

AGENTS—Auckland: Alfred Buckland & Sons Ltd.; Hamilton: A. M. Bisley & Co. Ltd.; Gisborne: Tractor & Machinery Co. Ltd.; Palmerston North: Reid & Gray Agency Co. Ltd.; New Plymouth: J. B. MacEwan & Co. Ltd.; Masterton and Nelson: Levin & Co. Ltd.; Blenheim: R. Cresswell & Sons Ltd.; Greymouth: Greymouth Motors Ltd.; Christchurch, Ashburton, Timaru, Waimate and Oamaru: National Mortgage & Agency Co. of N.Z. Ltd.

F.11.



WISCONSIN

.. the power in the land

Farmers need power . . . in remote places they need reliable power, that's why Wisconsin is the choice of the experienced farmer.

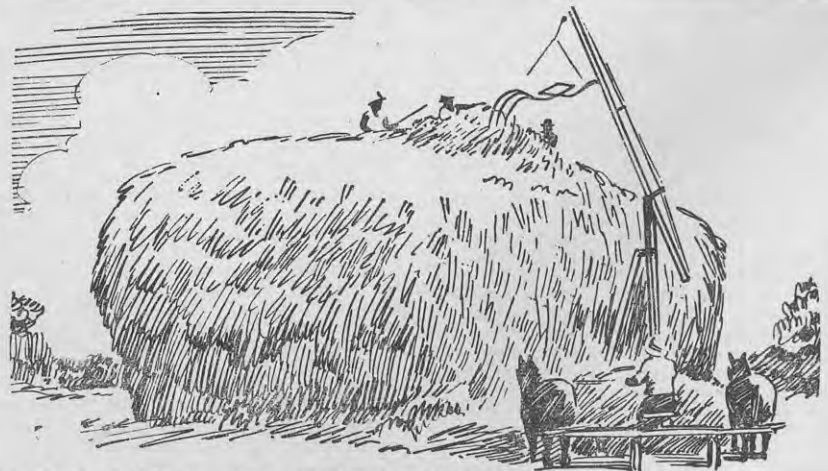
The Wisconsin heavy duty engine with its four power packed air-cooled cylinders is suitable for all types of farm use. It is available complete with electric generator and self starter and incorporates many outstanding features.

A full range of parts and accessories are constantly available.

Order early by contacting your nearest office of . . .

DORING IMPLEMENT SUPPLIES LTD

P.O. Box 1179, WELLINGTON. P.O. Box 68, FEILDING. P.O. Box 1203, CHRISTCHURCH.



HOW WILL IT OPEN UP ?

Ask
your
Produce
Merchant
for

You can enrich your hay and make sure it opens up next season in first-class condition by using TOMOANA HAYSTACK MIXTURE. TOMOANA HAYSTACK MIXTURE is a molasses-salt-mineral mixture, specially made as a crumbly meal for easy handling of the molasses. It is simply thrown on, layer by layer, as the stack is built. The mixture works in two ways. Not only does it give a good "cure" to the whole bulk of the hay, but it also forms part of the molasses diet in winter when hay is normally fed out.

TOMOANA HAYSTACK MIXTURE

For further information write to **W. & R. FLETCHER (N.Z.) LTD.**, Box 663, Wellington.