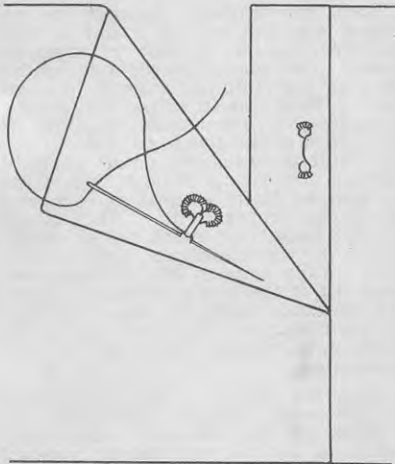


SEWING FASTENINGS ON GARMENTS



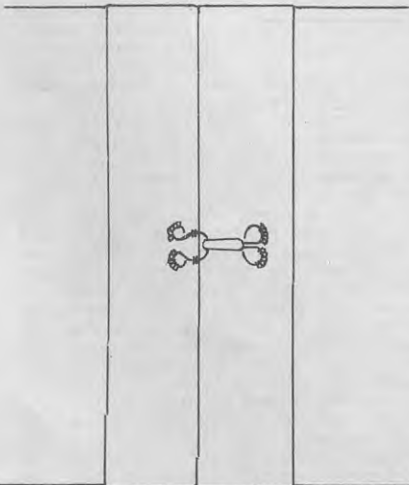
Hooks are sewn on the upper edges of openings with buttonhole stitch. The needle is shown in position for taking another stitch over the end of the hook. A straight eye is used on the placket.

the end of the hook. Take several overhand stitches over the end of the hook to prevent it from rising away from the material.

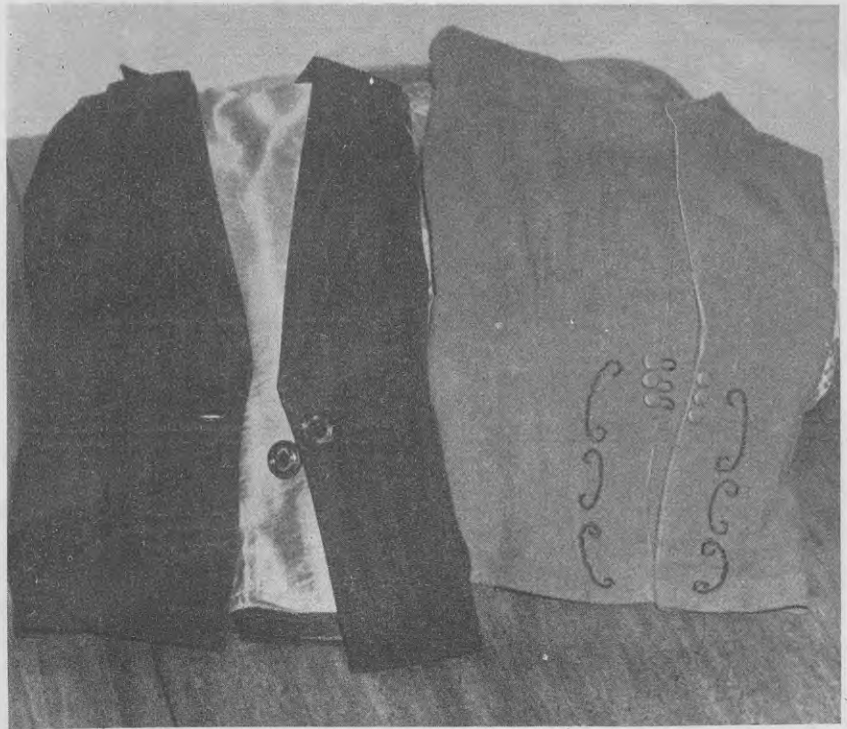
Eyes

Use straight eyes when the edges of the closing are to overlap and round eyes when the edges are just to meet. Thread loops may be used instead of straight eyes. Close the placket correctly after the hooks have been sewn on and mark the positions for the eyes at the ends of the hooks. Straight eyes are placed back from the edge on the right side of the under part of the placket. Use buttonhole stitch.

Round eyes are sewn nearer the edge of the fabric with part of the eye protruding over the edge. Use a few buttonhole stitches at the edge of the fabric to prevent the eye from lifting away from the material.



In the sewing on of a round eye two or three stitches should be taken over each side of the eye at the edge of the material.



[Jack Welsh and Sons photo.]

Link buttons and buttons with loops make decorative fastenings.

Thread Loops

The choice of thread depends on the size of the loop to be made—the longer the loop the thicker the thread. Make loops for hooks the same length as the metal eyes. Mark the positions for the loops as for metal eyes. Take several stitches one on top of the other, leaving loops all the same length on the right side of the material. Do not leave the loops too loose, but do not draw them so tight that they pucker the material. Buttonhole over the loops, taking care not to catch in any of the material and keeping the stitches very close together.

Longer thread loops can be used in place of buttonholes when an edge-to-edge closing is desired.

Buttonholes

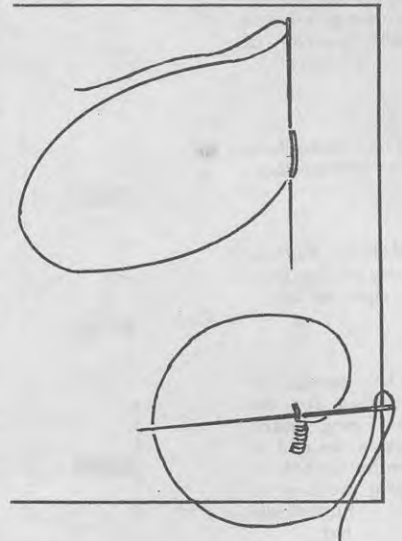
Where buttons are to be used as fasteners it is usual to make the buttonholes first. For a centre front closing the outer ends of the buttonholes should lie on the centre front line. The convention is to fasten women's garments right over left (with buttonholes on the right-hand edge) and men's and boy's garments left over right. Bound or worked buttonholes may be used.

Worked Buttonholes

Make worked buttonholes after the edge of the garment has been faced. Mark the position for the buttonhole on the straight grain of the material unless the garment is cut on the bias. Make it just long enough for the button to pass through. Stitch round the mark twice, using a sewing mach-

ine or backstitch and making the outer row $1/10$ to $1/8$ in. from the marked line. Cut on the line, then overcast the raw edges.

Work from right to left in buttonhole stitch, starting at the inner end of the buttonhole, rounding the outer end (which should fall at the centre



Thread loops may be used to replace straight eyes. Upper—Making the loops of thread. Lower—Buttonholing over the loops.