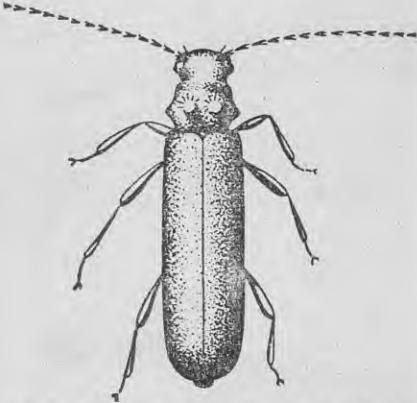


6d each
paid for these
**BORER
BEETLES**



Note prominent hump on each side of head with large swelling on top . . .

TWO-TOOTHED LONGHORN

(*AMBEODONTUS TRISTIS*—do not confuse with lemon tree borer.)

DISTINGUISHING FEATURES:

The two-toothed longhorn beetle is $\frac{1}{2}$ " to 1" long and narrow bodied. Dark reddish colour with thin and irregular covering of fine short yellow hairs. Just below the head there is a broad conical spine sticking out each side. On top of each spine there is a shining round swelling. Minute warts cover the back. The head is pitted with numerous holes. Beetle exit holes from timber are oval and up to $\frac{1}{3}$ " across the widest diameter.

Probably the most destructive borer in New Zealand. Life cycle is at least 5 years, possibly 12-15 years. Thus the 1" long grubs have plenty of time in which to do damage. Burrows may extend many feet through joists, studs, flooring, wall boards, etc. without breaking surface. Beetles shun strong light and prefer to emerge on the underside of timber **SO LOOK UNDERNEATH THE HOUSE**. Beetles frequent old macrocarpa stumps and are prevalent in houses built on old bush areas. No real research has been done in N.Z. on longhorn eradication and the Boracure Laboratory will pay 6d. each for the first 5,000 live beetles sent in, with a special price of £10 for the largest individual collection.

Beetles must be kept separated as they seize each others legs and antennae and won't let go. Pack in individual containers (preferably tins) or separated by several thicknesses of paper. Wrap securely and send to The Laboratory, Boracure (N.Z.) Ltd., P.O. Box 632, Wellington. State number of beetles sent, print your name and full address.



*Your best buy
in Blankets*



WOOLLENS WITH A PEDIGREE

Distributors throughout N.Z.

Sargood, Son & Ewen Ltd.



The Bank behind the Dominion's Business

THE BUSINESS WOMAN

I bank **B.N.Z.**
because . . .

" . . . There are times when I need experienced guidance and I have found my B.N.Z. Manager so helpful and courteous that I never hesitate to ask his advice."

Complete banking facilities throughout over 260 Branches and Agencies in the Dominion.

B.N.Z. BANK OF NEW ZEALAND
Established 1861

