

## "NEW DEPARTURE" MILKER

DIRECT  
FACTORY  
TO FARM

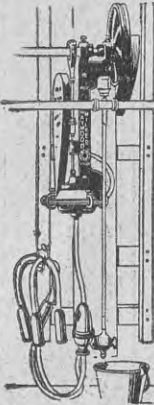
Always the leader in advanced design and improved efficiency.

To avoid delay during rush period (from June onward) order now, for immediate or forward delivery! Easy terms: over 1 to 3 years, instalments commencing September.

"NEW DEPARTURE" Milking efficiency will boost production and extend the milking season. From now on is the best time to instal.

Advertising space is restricted, but our free Booklet, "A New Departure in Dairying," tells you all about this distinctive, modern system of commonsense milking.

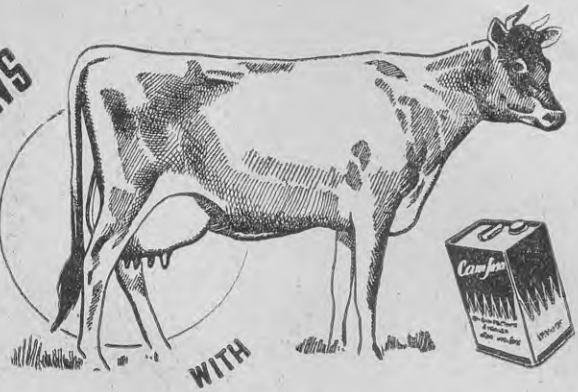
No releaser, vacuum tank, pulsators or air piping. Absolutely silent and entirely self-washing. Write now!



**J. E. HAYWOOD LTD.**

ANZAC AVENUE (Box 1435) AUCKLAND

PROTECT  
YOUR COWS



Camfosa is the ideal disinfectant with proved germ killing power. Excellent for washing out cows, sore udders, foot troubles etc. Relied on by farmers everywhere.

Sold by all Stores  
1/3 3/- 11/6 22/6

**CAMFOSA**  
DISINFECTANT

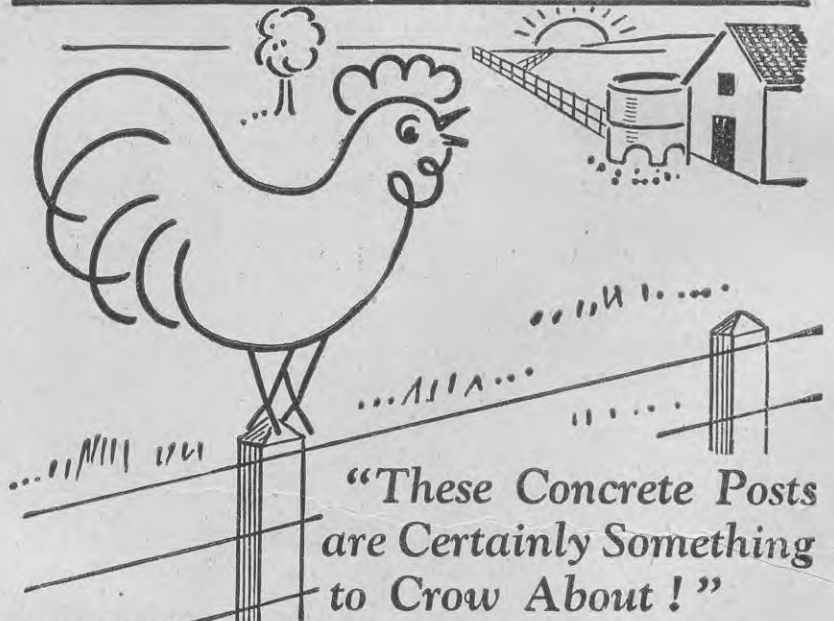
Mrs. J. FRANK JACKSON LTD, 535 Parnell Road, Auckland.

## FREE BULLETINS

THE Department of Agriculture publishes a wide range of bulletins on farming subjects. How many of the selection listed below would be of assistance to you? Specially written by experts for New Zealand conditions, they are accurate, they are authoritative, and they are FREE.

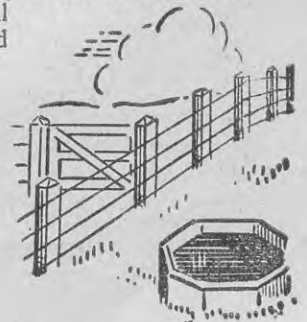
- No. 19: Internal Parasites in Poultry.
- No. 51: Testing Milk and Cream for Content of Fat.
- No. 154: The Construction of Milking-sheds.
- No. 155: Lucerne.
- No. 171: Internal Parasites of Sheep.
- No. 184: Concrete on the Farm.
- No. 189: Control of Internal Parasites by Phenothiazine.
- No. 209: How to Defeat Wood-borers.
- No. 248: Liver-fluke of Sheep and Cattle.
- No. 270: Oats.
- No. 273: The Construction of Cherry Enclosures.
- No. 274: Sheep and Wool Industry of New Zealand.
- No. 276: Phylloxera-resistant Vines.
- No. 278: Prevention of Hydatids.
- No. 280: Turnip and Swede Crop.
- No. 284: The Rabbit Pest and its Control.

These may be obtained free from the Department of Agriculture, Auckland, Palmerston North, Christchurch, or Dunedin.



THERE'S no labour wasting and expensive upkeep when you fence with concrete posts. It's a permanent job. Not only for fencing posts but also for sheds, pig pens, water tanks, cow yards, silos and troughs, concrete is permanent, economical and clean. Send a postcard, and we will forward full particulars on how to build your requirements in concrete.

**WILSONS**  
N.Z. PORTLAND  
**CEMENT**



Wilson's N.Z. Portland Cement Ltd., South British Insurance Building, Shortland Street, Auckland.