

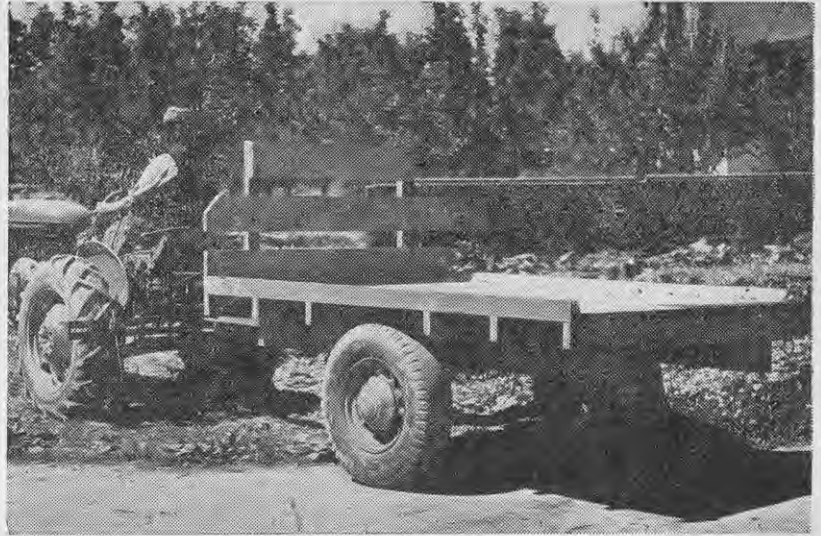
both. Generally, Delicious should be harvested first and packed for long cool storage. Unless needed for export, the Jonathan can remain on the trees a little longer, in order to develop that crisp tree-ripened condition without which this variety is not favoured as a dessert apple.

### Technique of Picking

Although fruit picking is a simple operation, inexperienced workers should be taught the correct method and should be carefully supervised until they are accustomed to the work. Fruit should be picked at the right stage of maturity by giving it an upward twist. In this way the stalk is bent over and separated from the spur at the abscission ring. Pulling movements must be avoided, as these are liable to cause breakage of fruit spurs and loss of crop the following season. Fruit should be held in the palm of the hand rather than between the finger and thumb.

### Equipment

A good type of ladder was illustrated on page 637 of the December Journal. A range of sizes for use according to the height of the tree being picked is desirable. Picking bags, buckets, or aprons are generally used, although these are not necessary with certain types of low-headed trees, the fruit from which can be handled straight



Suitable trailer for transporting fruit to packing shed.

into boxes. Some growers pick with boxes set on the specially made wide top of ladders. Whatever the method used care is necessary in the handling of the fruit which is easily marked or bruised at this time. Damage to fruit often occurs when pickers working on ladders use a bag or apron. In reaching for distant fruit, pressure is applied to fruit already in the bag if the bag remains between picker and ladder.

Orchard boxes may be used permanently as containers for ungraded fruit. Where new boxes are used for picking, the fruit from these can be emptied on to the grading table and the boxes retained in the shed and used for packing.

For transporting fruit from tree to packing shed, a flat top, low set lorry is desirable. The type illustrated is recommended for use as a trailer. Not only can it be manoeuvred readily but it is also suitable for road transport of fruit.

### Grading Fruit

Apples and pears need to be graded according to standards prescribed in the New Zealand Grown Fruit Regulations 1940 and amendments, or in accordance with decisions of the Fruit Marketing Council. Details for the coming season are not yet available but fruit growers should get the information from the local Orchard Instructor when it is available.

## Something NEW in SEED SERVICE

We have dealt exclusively for many years with commercial growers—benefit by this experience. We GUARANTEE to supply those strains which commercial growers have proved most successful. Use their experience, get their results—mail your order now for seeds of commercially tested quality.

SWEET CORN—Golden Cross Bantam	6d.
LETTUCE—Commercial, Summer	1/
PEAS—Commercial, Improved, Greenfeast	1/
CARROT—Chantenay	6d.
BETROOT—Commercial, Improved, Detroit	1/-
BEAN—Commercial, Stringless	1/-
ASTER—Giant Crego	1/-
ZINNIA—Giant, Dahlia Flowered	1/-
MARIGOLD—Sunset Giant	6d.
PETUNIA—Ruffled Monster	1/6

Postage: Approx. 2d. extra—free on orders of 2/6 or more.

FREE PRICE LIST!

Order with confidence and send for full details of this new seed service and our free price list of suggested varieties.

**COMMERCIAL SEED Co.**  
25 WAIMANA AVENUE, NORTHCOTE, AUCKLAND.

# DRENCH EARLIER

For HEALTHIER FLOCKS



Don't delay Drenching . . . take nothing for granted . . . Protect against scour and unthriftiness. That's the soundest advice Joseph Ford can offer farmers. So improve the general health and condition of your stock . . . use Joseph Ford's Cobalt Drench. Starving is not necessary. Ford's Drench can be given with perfect safety to ewes or lambs of any age or condition. And save time by using a Ford's Drenching Gun. It's Quick and Effective.



# JOSEPH FORD'S COBALT DRENCH

From N.Z. Loan & Mercantile Agency Ltd., or your Stock and Station Agent, or write to the Manufacturers—  
**LOUDEN BROS., LTD., PALMERSTON NORTH.**