

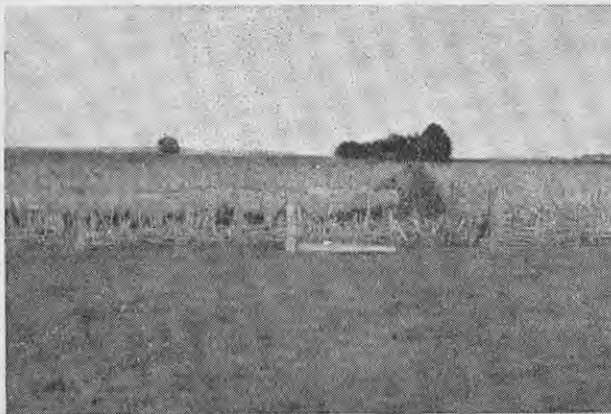
VIEWS OF FARM AND DISTRICT



Left—Application of lime has been the keystone to Southland's development. Right—Portion of the dairy herd.



Left—View showing layout of farm. In foreground a hard-grazed run-off paddock for cows coming off chou moellier. Right—Chou moellier grown with rationed fertiliser.



Left—Typical dairy farmers' ewes on good crop of chou moellier divided into breaks by few turnip drills. Right—Good crop of swedes near Edendale after tops have been eaten off by lambs.