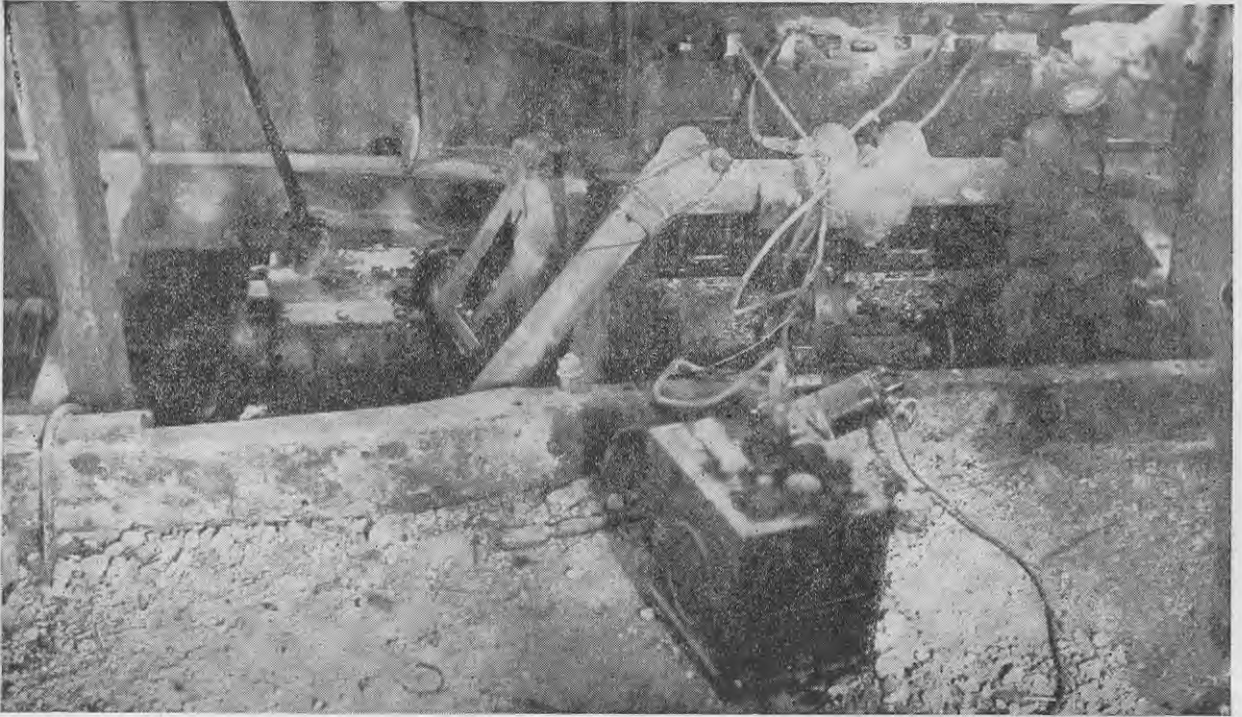
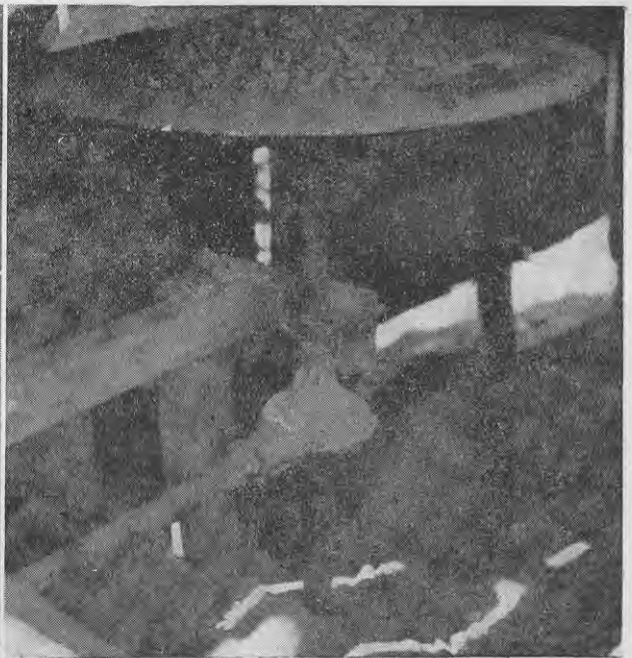


## MACHINERY FOR CRUSHING



The power unit, the engine of an old Dodge car. One of the pulleys used to drive the machinery can be seen on the transmission shaft at the extreme left.



Left—The elevator which transports the limestone from the breaking-down rollers to the hopper of the pulveriser. The rotary feeder plate can be seen in the bottom of the picture.

Above—The rotary automatic feeder, showing the driving mechanism improvised from an old motor-car back axle.