



Mature podzol, North Auckland.

on the foothills south of Katikati the soils are more leached and respond to phosphate, potash, and lime dressings. A similar series of soils covers the rolling and moderately steep hills in the eastern Bay of Plenty and northern Gisborne districts.

Darker brown soils derived from andesite ash beds occur on the easy land of Western Taranaki and along a strip extending from Ohakune to Taihape. They are slightly to moderately acid and again show well the stages of leaching under increasing rainfall. The most fertile are those covering the low-rainfall areas of South Taranaki, where the topsoils are black, and the most leached soils and consequently the least fertile occur closer to Mt. Egmont, where the rainfall rises to 100in.

(b) **The brown granular clays:** Brown granular clays cover large areas of hill land between Dargaville and Kaitaia, in the Waitakere district near Auckland, and in the Coromandel Peninsula. They cover the low hills that rise from the Waikato farmlands in the Hamilton district and much of the rolling land further north. The North Auckland soils of this group have granular free topsoils, and in the more leached types the subsoils are compact and sticky. The soils that are little leached are fertile, whereas in the well-leached stages they are strongly acid and infertile. The soils of this group in the Waikato farm well.

(c) **The red-brown loams:** The red-brown loams are confined to the Auckland district, where they are derived from basalt volcanic rocks and scoria.

contain much iron, as do all the other sub-groups of the brown loams.

The yellow-brown loams on the easy country from northern King Country north to the Waikato mouth and east to Tirau and Putaruru are free silt loams, slightly acid. They respond to phosphate and to lime. Where the rainfall is heavy—more than 80in.—the soils are markedly leached, compact in the subsoils, and have in places a very thin iron pan.

These soils require heavier dressings of phosphate and lime.

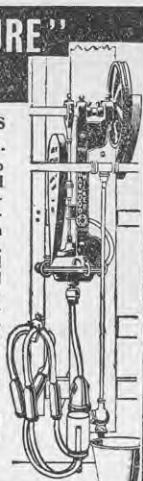
The Tauranga-Waihi soils are coarser in texture and show well the progressive stages of leaching. The least leached are the black soils of Tauranga. On the Waihi Plains and

"NEW DEPARTURE" MILKER

THE 1945 MODEL HAS NOW BEEN RELEASED.

Dual - Vacuum - Break. No hand stripping. Each Bail Unit a self-contained milker. No expert erector required. Any farmer can easily and quickly instal. No Service required. All wearing parts simple, and cheaply replaced. Incredibly simple. Any woman or child can operate. Perfectly silent. Restful and pleasant to use. Positively and thoroughly washes itself. Most hygienic milker ever made

Sooner or later you'll instal the "NEW DEPARTURE." MILKER.



J. E. Haywood Ltd.
ANZAC AVE. Box 1435 AUCKLAND

NOW AVAILABLE — Immediate Delivery

BAMFORD DIESEL ENGINES

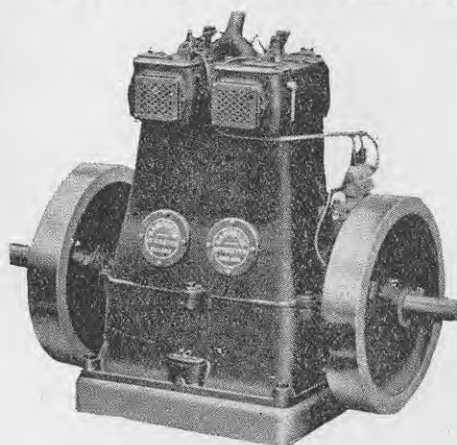
in SIZES, 4½, 6, 10,
12 & 16 H.P.

also

We have arriving very shortly a shipment of
BAMFORD

3½ H.P. ENGINES.

On advice as to which size of Engine fills requirements we will forward illustrations, specifications and details of outstanding constructional features.



TYPE DDI, 10 B.H.P., TWIN CYLINDER

A. M. BISLEY & CO. LTD.

Ward Street, Hamilton. P.O. Box 239. Distributors for New Zealand.