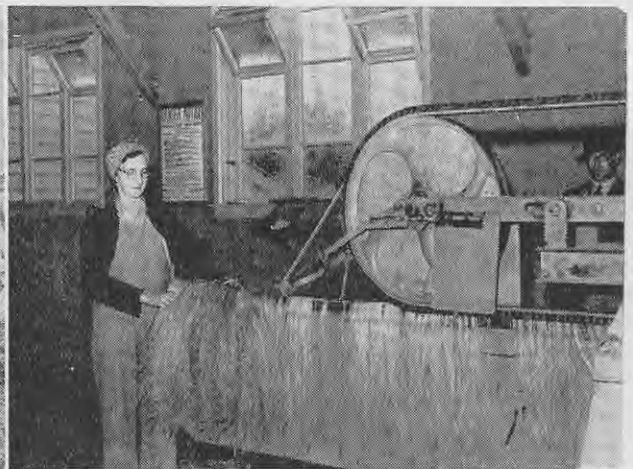


All the machinery had to be built in New Zealand, some of it being of entirely new design, such as this tow scatcher. Construction of machinery commenced in July, 1940.



The straw is gaited in the field for drying.



The first wheels commenced turning out flax in March, 1941. [{"Star-Sun" photo}]



Retting tanks are filled with straw.



The flax is put up into "hands" ready to be baled for export to Great Britain. [{"Star-Sun" photo}]