

Government stock seeds are the product of much care on the part of the Grasslands Division of the Plant Research Bureau, and of the Department of Agriculture. The original work is done by the Grasslands Division, which selects the material from which the nucleus seeds

Government Stock Seeds

are obtained. Every plant in the selection has to be examined before it can be saved for seed. The nucleus is then taken over by the Department of Agriculture for multiplication under careful scrutiny.

AS the many farmers who have applied for Government Stock seeds this season have by now realised, it has been impossible to supply every grower with the seed he desired.

This is regretted but it gives some indication of the growing popularity of Government Stock seeds; it also shows that the demand far exceeds the supply, particularly so in the case of perennial ryegrass and Montgomery red clover. There are two main reasons for this shortage. The amount of nucleus seed produced is small so that the contract areas from which Government Stock seed is obtained are not large, while seasonal conditions play a considerable part in determining the resultant crop. The other reason is that farmers have created an artificial demand by reason of their orders for these seeds not having been filled in past seasons.

Important Points

Apart from the usual attention given to the preparation of the seed bed for the sowing of grasses and clovers, con-



The initial stage in the production of 'Government stock seeds,' the growing of special plants in order to select the best types.

By
J. A. S. MILLER,
Instructor in Agriculture,
Wellington.



Inspection of a nucleus area of perennial ryegrass prior to harvest.

sideration should be given to the following points:

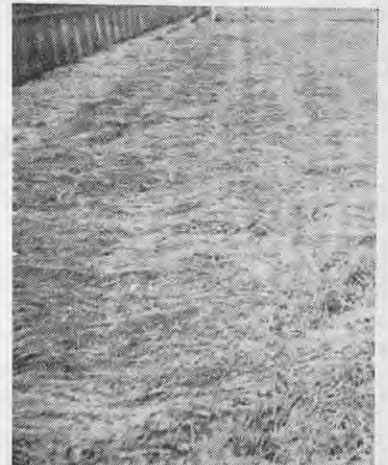
1. **Perennial Ryegrass:** It is the aim of every grower to produce Pedigree seed when he sows an area down with Government Stock seed and there is one main impurity which prevents an area from reaching this standard—Italian ryegrass. It is, therefore, undesirable to sow Government Stock perennial ryegrass on an area which has previously been in Italian ryegrass. Old stack bottoms should be avoided when drilling, especially if there has been Italian ryegrass in the stack. A clean drill or seed sower is essential as even a trace of Italian ryegrass seed may cause the area to be degraded or even rejected.

Many farmers apply for both perennial ryegrass and white clover for sow-

ing in the same area but this practice is not recommended as it does not lead to the most effective utilisation of the seed available, and it is the maximum production of seed which is required.

2. **White Clover:** As this is a specially selected strain of white clover, it is undesirable to have it sown on an area in which there is much volunteer white clover. Certain districts are noted for this volunteer growth and Government Seed stock is, therefore, not recommended for these districts. Suckling clover is a weed which is troublesome and may cause the white clover seed to be rejected on the purity test. Hence, every endeavour should be made to sow on an area relatively free from this weed. The remarks which apply to the sowing of white clover with perennial ryegrass also apply here though it may be advantageous to sow some Italian ryegrass with the white clover. Several farmers have been allotted both white clover and Italian ryegrass for this purpose, the former to be harvested in the first season and the latter in subsequent seasons.

3. **Cocksfoot:** This is a specially-selected leafy variety of cocksfoot evolved by Canterbury Agricultural College and is a decided improvement



The nucleus area cut and ready for threshing.