



**A SHEEP
AT A TIME...**
and plenty of room for
**MILK, VEGETABLES,
BUTTER, ICE COLD
DRINKS and
PUDDINGS!**

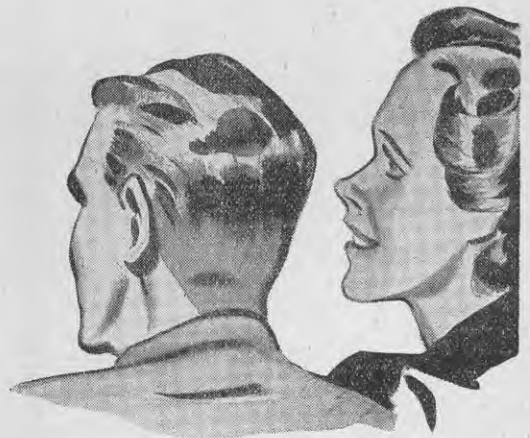
THIS PHOTOGRAPH SHOWS YOU THE
AMAZING SIZE OF

FRIGIDAIRE'S

SPECIAL MODEL

FOR FARMERS

Frigidaire realised that a farmer needed a REALLY BIG refrigerator . . . big enough to store a whole sheep at a time if necessary . . . PLUS farm produce like milk, eggs, butter, and other perishable foodstuffs. So Frigidaire built this model BIG . . . and here it is! It offers you all the convenience of smaller FRIGIDAIREs and operates on a mere trickle of electricity. Send this coupon for full particulars and enjoy really fresh food this Summer, and AVOID WASTE from now on!



★ POST THIS COUPON.

FRIGIDAIRE NEW ZEALAND,
PETONE.

Please send me full particulars by
return mail of your Special Frigidaire
for farmers.

NAME

ADDRESS

