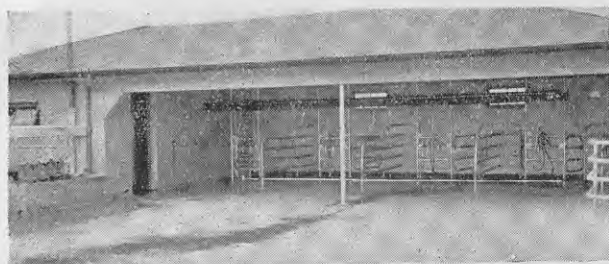
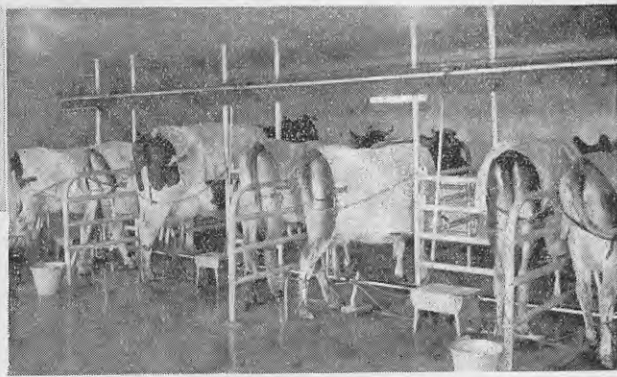


Improvement in Quality of Town Milk Supply In New Zealand



Above.—A view of the easily cleaned shed and holding yard. The fall of the floor and yard is such that drainage is towards the lower left-hand corner, as is shown by the still damp patches.



Right.—A view taken during the evening milking.
[H. Drake, photos.]

By
E. J. CALLAGHAN,
Veterinarian, Hastings.

A point of interest is the "change room," which is complete with a porcelain wash-hand basin, hot and cold water, and a medicine chest. This much-appreciated facility enables those engaged in the milking shed to perform their duties under the most hygienic conditions. A "change room" could, with advantage, be worked into the plan of many proposed new sheds.

MUCH progress has been made during the past few years in the supplying of pure, wholesome milk to the people of New Zealand.

The two main factors with which the Department of Agriculture is concerned are, firstly, those under the control of the Dairy (Milk Supply) Regulations, 1939, such as the erection of suitable milking sheds and milk houses, the production of a clean, wholesome milk supply on the farm, and the protection of milk and cream from contamination; and, secondly, the general inspection of herds and the tuberculin testing of herds supplying the milk.

Although tuberculin testing is not compulsory, it is pleasing to note more and more herds being tested each year, with the result that in the Hawke's Bay area the milk supply of such towns as Dannevirke and Wairoa is obtained from tuberculin-tested herds—that is, the herds are free from tuberculosis. The milk supply of the various hospitals and schools in the district—Pukeora Sanatorium, Hawke's Bay Children's Home, and Woodford House School—is also obtained from tuberculin-tested herds.

The accompanying photographs are of the Napier Hospital milk supply being taken on their Park Island Farm. The building is ideal from the point of view of health, sanitation, and ease of cleansing, and the herd, including the heifers and bull, is tuberculin-tested.



THE HOMESTEAD STOP LEAKY ROOFS

SISALKRAFT — used under corrugated iron or tiled roofs unfailingly prevents wet and stained ceilings. It is easily and speedily fixed, extremely . . . rot-proof — sound-proof — water-proof and non-shattering. SISALKRAFT outlasts any other material for this purpose, and no timber or wire netting is required for fixing.

8/3 per 100 sq. ft.

SISALKRAFT 9 ply BOARD, supplied in rolls. Much stouter than the above, and unequalled as a wallboard for lining across studs and ceiling beams. Replaces the less effective plaster, cement sheets and the like. A Double-face, Biscuit-coloured Wallboard requiring no other support, covering strips for all joints supplied FREE.

17/6 per 100 sq. ft.

Use these Materials and Do Your Repairs and Renovating Yourself.

**BLACK OUT YOUR WINDOWS WITH SISALKRAFT.
100% EFFECTIVE.**

FILL IN THE COUPON FOR FREE SAMPLES OF SISALKRAFT.
W. H. HUTHNANCE & CO.,
G.P.O. Box 1545, Wellington, or Savoy Bldgs., Princes St., Dunedin.

Name

Address

..... J.A.N.