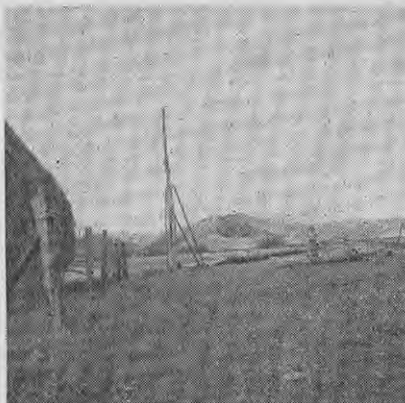




That broken hinge will soon allow this door to fall and probably get broken, resulting in a high replacement cost and damage to the contents of the shed.



That haymaking machinery left at the stack soon rots when the aftermath grows around it, and may be the cause of a serious accident.



That Lawsoniana hedge, through lack of double fencing, is damaged by stock, and its value as a windbreak and shelter belt is lost.



That lone ragwort plant, in full bloom, will soon produce enough seed to infest the whole paddock. Remove it in a sack, burn it, and save yourself future work.



That broken fence which allows stock to wander may result in dairy cows becoming a complete loss from torn teats and udders, and causes much loss of time.



That wire gate, probably erected temporarily, becomes a permanent fixture, resulting in loss of time and temper, and soon deteriorates beyond efficient use.



That muddy gateway, through which the herd is driven daily, results in chills to the udder, and is a predisposing cause of mastitis. Fill it up in dry weather and stop this loss.



That unfenced haystack, to which stock have access, is being wasted, and this limits the amount of feed available for the winter.



That wasted effort. In a few months this ensilage stack will be reduced to a manure heap, fit only to refill the hole dug to procure the weight for the stack.