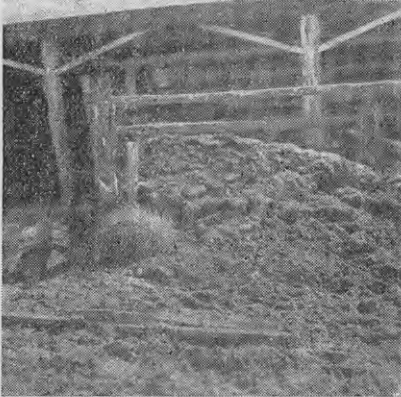


No Apologies!

By G. A. BLAKE, Instructor in Agriculture, Stratford.

Were These Photos Taken On Your Farm?

THE following illustrations depict scenes on many farms, and are unfortunately only too common. They will serve to draw your attention to those minor details which, in the aggregate, amount to serious loss. All photos are by the author. (No apologies are extended to the farmers on whose farms these photographs were obtained.)



That heap of stock yard manure, from which the elements are gradually leaching the fertilising value, is being wasted. Install a liquid manure outfit and turn this waste into grass.

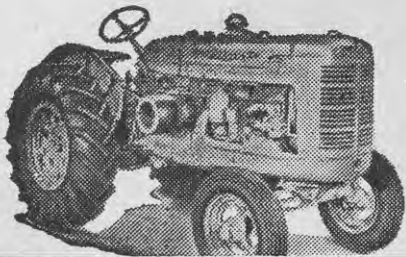


That dirty gully infested with blackberry, ragwort and fern can be turned into a valuable asset by planting it with trees to provide shelter, posts and firewood.



That farm implement left under the hedge from one season to the next soon depreciates, and, when wanted, is not in a workable condition. Keep it in a shed.

GOOD FARMERS CHOOSE McCORMICK-DEERING



FOR UNPARALLELED WORK CAPACITY

The name, McCormick-Deering on a tractor means something more than modern, streamlined design and proved up-to-the-minute features. It means that the machine is tougher, faster, more reliable and more economical than anything in its power class. It means, too, that its peerless work-capacity springs from quality materials, sound engineering and thirty years of leadership in tractor manufacture.

A MODEL FOR EVERY FARM, EVERY JOB!

The McCormick-Deering range provides a tractor suited to every size farm and to every sort of going! Thus the astute farmer can choose a model which fits his needs like a glove—one which will pay its way every day, all year through. But make your enquiries urgently. Under war-time conditions, supplies are erratic and delays in delivery are sometimes inevitable. Send the Coupon below for full particulars and remember, you can rely upon International Harvester for your spare parts and complete service.

SEND THE COUPON FOR FREE CATALOGUES

McCORMICK-DEERING
INTERNATIONAL HARVESTER COMPANY OF N.Z., LTD.

McCORMICK-DEERING,
P.O. Box 563,
CHRISTCHURCH, C.I.

Please send me information on tractors. I
want to work acres of ^{hill} _{flat} country.

Name

Address

IF IT ISN'T McCORMICK-DEERING...IT ISN'T A FARMALL