

Tomoana turns WHEY into PROFIT

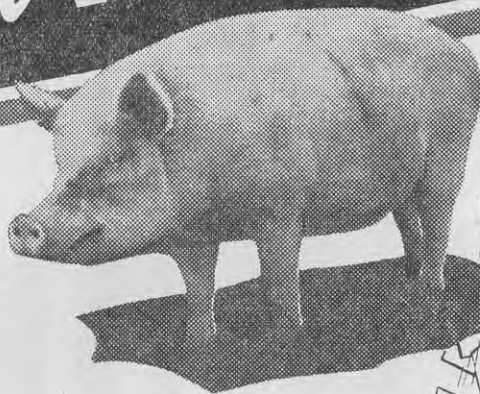
Practical feed trials have definitely established that **Whey plus Tomoana Meat Meal** is an excellent and profitable pig food!

Every 100 gallons of whey contains approximately 55 lbs. of digestible carbohydrates but only 6 lbs. of protein.

A balanced diet for pigs requires twice this proportion of protein. Therefore by adding Tomoana Meat Meal, the richest known source of digestible proteins and fats, a perfectly balanced pig ration results.

**HERE'S
ACTUAL
PROOF**

**86 Pigs fed on
WHEY and
TOMOANA Meat
Meal averaged over 40 lbs.
each at 8 weeks . . . were
Porkers at 16 weeks.**



SEND THIS COUPON!

W. & R. Fletcher (N.Z.) Ltd.,
P.O. Box 663, Wellington.

Please send me full details
on **Whey** feeding pigs and
calves for profit.

NAME _____

ADDRESS _____

J.A.

TOMOANA MEAT MEALS

