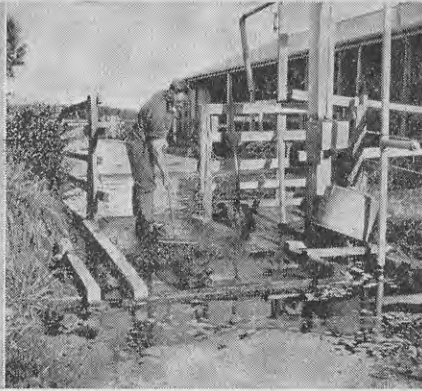




The solid droppings are collected and dumped into the sump.



The washings from the shed and yard collect the valuable urine and serve to dilute the manure for distribution.



A block in the drain to the sump diverts rain or other unwanted water from the sump.

was filled every 10 days. This season, 21 acres were top-dressed, the five-acre paddock specially top-dressed for early feed being one of the paddocks already treated. The results on this paddock showed that although the first dressing gave very good results, the second one was outstanding. In the three years, 55 of the 120 acres have been treated with the liquid manure.

Although it would take about seven years to go over the farm at this

rate, Mr. Marchant considers that it will be best to treat the whole farm rather than to concentrate at this stage on a limited area. The second treatment of the one five-acre paddock has convinced him, however, that remarkable results could be obtained by a little more concentration than what he has aimed at so far.

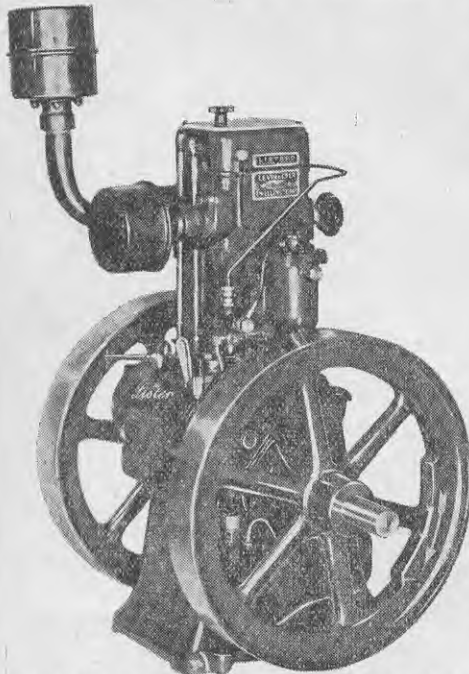
From the rate at which the sump is filled, it will be seen that for each

cow about four gallons of liquid manure per day was collected on this farm, and the distribution shows that an acre was top-dressed for each three cows milked. The quantity of liquid manure handled will, of course, depend on the amount of water required and used to wash down the shed and yards. This will also affect the concentration of the manure. The thinner the liquid the easier it is to pump and

## 2 Further Unique Features

OF THE

# "LISTER" DIESEL ENGINE!



1. ALL LISTER DIESEL ENGINES are now fitted with cylinder bores treated with the LISTARD process of chrome hardening, which has been proved to give the greatest wear resisting surface yet known.
2. THE LISTER DIESEL 3 h.p. engine used for milking plants is fitted with a Thermostat as standard equipment, ensuring perfect running on light loads.

**LEVIN & Co. Ltd.** (MACHINERY DEPT.)

P.O. Box 1496. WELLINGTON, C.I. 'Phone 40-150.

Branches at: Blenheim, Nelson, Masterton, Feilding, Wanganui.

AGENTS THROUGHOUT NEW ZEALAND