

Strawberry Clover for Wet or Saline Soils

UNDER very wet or saline conditions white clover does not thrive. Desirable as it may be in every good dairying pasture, it is quite impossible to get it established under the above conditions.

Fortunately, however, it is in such places that no difficulty is experienced in getting strawberry clover to flourish, and in a field of varying soil conditions pure associations of each with various degrees of merging of the species will be noted according to these soil conditions.

Strawberry clover is a vigorous grower, an excellent companion plant for the better grasses, and will tolerate wide variations of soil moisture ranging from temporary submerging and water-logging to considerable drying out in the summer.

It certainly has an important place on all reclaimed tidal areas or old marine plains where salinity or soil moisture content is at times too high for white clover to flourish.

—C. WALKER, *Instructor in Agriculture, Thames.*



Vigorous growth of strawberry clover on a waterlogged area.

An Effective Gate-shutter

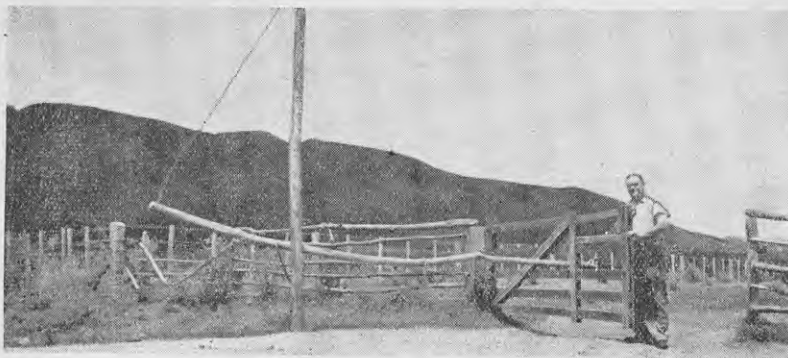
ON many farms the problem of maintaining gates in a closed position to restrict the movement of

stock to certain intended areas is not always easy, especially where many men are employed and much of their work is done on horse-back.

This difficulty has been overcome by the manager of one large holding in the Whakatane district with the assistance of the ingenious device illustrated in the accompanying photograph. It is simple and inexpensive to construct, and is most effective in operation.

The photograph is self-explanatory, apart from the fact that the gate must be equipped with an automatic locking attachment rather than one of a hand-manipulated type. The gate shutter will definitely do the rest.

—C. R. TAYLOR, *Fields Instructor, Whakatane.*



New Conditions for Supplying Milk or Cream

NEW provisions governing the supply of milk or cream to creameries and cheese factories are made under the Dairy Supply Control Order, 1941, which revokes the Dairy Supply Control Order, 1940.

Under the previous Order a continuous obligation was imposed on the occupier of a dairy farm and his successors in occupation to carry on the same type of farming, and to supply milk or cream produced on the farm

to the same dairy factory as that to which the supply was delivered during the 1939-40 season. It was permissible, however, for a supplier to a creamery to transfer his supply to a cheese fac-