

have occurred where farmers have obtained a dominant ryegrass sward in the first year after a pure sowing of 20lb. per acre of cocksfoot. This quantity of seed, however, contained nearly 1lb. of ryegrass, and when it is realised that 1lb. of ryegrass contains 250,000 seeds (a seeding of nearly six to the square foot) this is readily explained when the differences in rate of establishment are also taken into account.

If, in spite of all precautions, ryegrass shows to any extent the area should be made into hay to prevent any ryegrass seed falling. If continued for a few seasons this treatment will, even in bad cases, eventually result in the elimination of the ryegrass, which is generally of the false perennial type. Land sown to cocksfoot should be well drained and, if possible, with a gravel subsoil. River banks are ideal for this purpose.

The yield of cocksfoot has a habit of varying from season to season. As high as six bags per acre have been obtained, but the average would be below three.

Italian Ryegrass

Italian ryegrass is generally sown pure at the rate of 25 to 30lb. per acre in the autumn after oats. Feed is obtained during the last autumn, winter, and early spring, and the area is

The Department apologises for the late publication of the "Journal" this month, which has been caused by difficulties in obtaining supplies of paper, due to the war. It is expected that normal supplies will be on hand for next month's issue.

closed for seed production about the middle of October. It is ready to harvest in January, coming in after perennial ryegrass. Forty bushels per acre of seed can be expected under average conditions.

Montgomery Red Clover

For seed production Montgomery red clover will never become popular with the Southland farmer, as the harvesting of the crop even in a favourable season

would not be before the end of April. Weather conditions at this period cannot be relied on, and consequently the element of risk is too great. In late years, however, a number of crops have been harvested, but in most cases the areas have not been as pure sowings, the general procedure being to include 2 to 3lb. of Montgomery red clover in the permanent seeds mixture. The area is grazed to the middle of November and then closed to stock.

With ordinary conditions, the crop is ready to cut in April. If sown pure, 8 to 10lb. of seed would be necessary, sown with 10lb. of either perennial or Italian ryegrass (as may be preferred), which is included for the purpose of holding the clover up to some extent and encouraging easier cutting.

It is often found that a very heavy seed crop lodges and rots to some extent before harvesting can be carried out. This may result in an opening up of the sward. In all cases, the Montgomery red clover would be spring sown, and generally sown with a nurse crop of oats. A yield of up to 200lb. per acre could be expected.

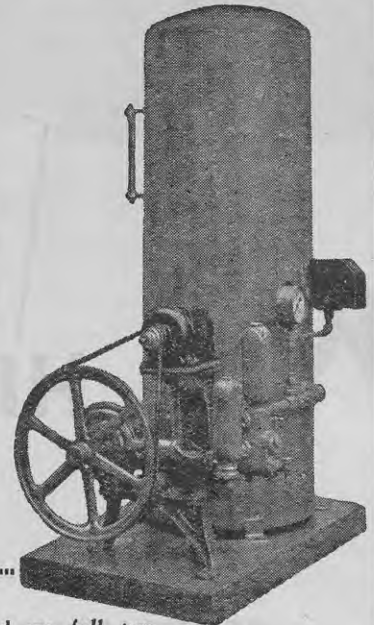
W. H. PRICE & Son, Ltd.

34-36 Manchester Street, - - CHRISTCHURCH.
Box 1084. Est. 1879. Tel. 36-072

Manufacturers of **"RENOWN" PUMPS**
AND AUTOMATIC PRESSURE SYSTEMS.

THE illustration shows Model number 31 "Renown" Automatic High Pressure Outfit. It requires only one-quarter to one-third h.p. motor to supply 240 gallons per hour at a pressure of 60 lbs. It is fitted with an automatic pressure switch and air volume control. The tank is constructed of heavy steel electrically welded and tested to 120 lbs. pressure.

For full particulars of all pumps post this coupon.



Please send me full particulars of "Renown" Pumps and Pressure systems.

Name :

Address :

J.A.