



FIG. 7. PASTURE-SWARD COMMONLY SEEN ON PODSOLIZED TE KOPURU SAND.

Stunted paspalum, *Lotus hispidus*, sweet vernal, suckling clover, and catsear. Note sweet vernal in flower. Photo taken 18/10/35.

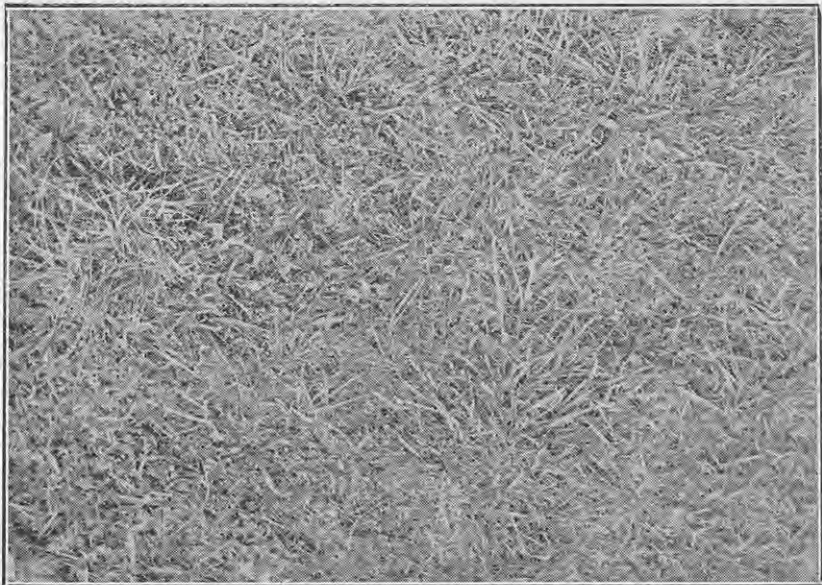


FIG. 8. TOP-DRESSED ORIGINAL PASTURE ON RED HILL SAND SURFACE-SOWN AFTER BURNING.

Sward improves in colour, suckling clover comes in, and photo shows resultant sward, which consists of ratstail, danthonia, suckling clover, catsear, and sorrel—a very poor low-producing sward.