



FIG 2. BARE SAND-DRIFT INVADING THE ROLLING COUNTRY OF THE OLDER FIXED DUNES.

The foreground, the typical vegetation supported by the sand.

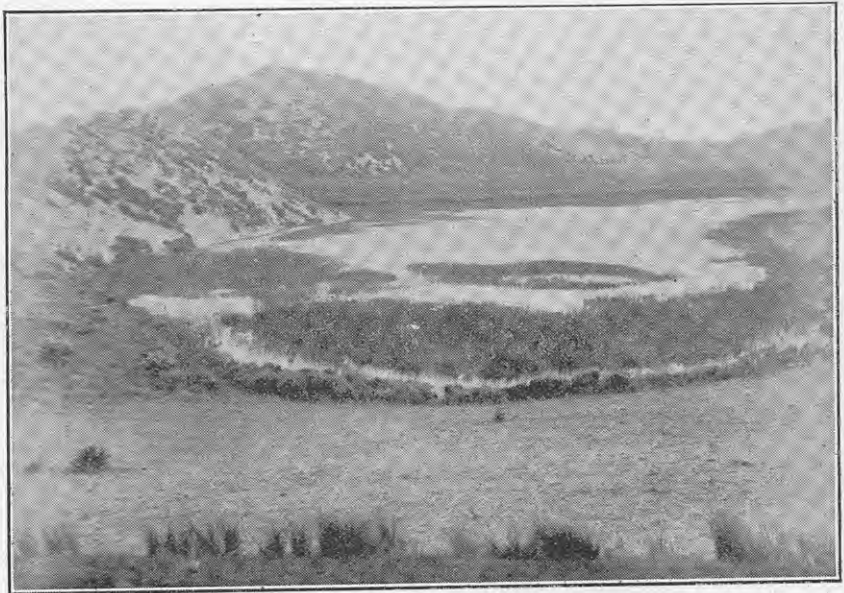


FIG. 3. POND FORMED BY THE YOUNG SAND-DUNES DAMMING BACK THE DRAINAGE OF THE OLDER FIXED DUNES.