

a slower-growing and better-class hedge on the lea side fully half a chain from the *Pinus radiata*, which can be cut down when the inner hedge is sufficiently high to shelter the homestead. Ornamental trees and choice shrubs of a tender nature can be planted with safety as soon as there is shelter. Extreme care must be taken, however, not to plant anything of a tall nature near the house: low shrubs should be nearest the buildings, and shrubs and trees of greater height near the hedge.

*Pinus radiata* plants are usually sent out as one-year seedlings in bundles. Other pines, Douglas fir, redwood, and *Cupressus Lawsoniana* are best obtained as two-year-old transplantings. Eucalypts and *Cupressus macrocarpa* are now usually sent out in trays as one-year-old seedlings. The trays are carried out and put near the pits, and the trees balled out from the trays as required.

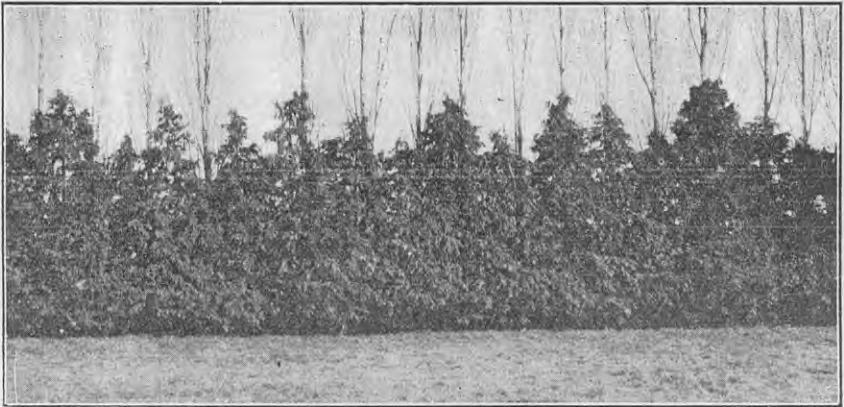


FIG. 6. TWO-ROW SHELTER.

Lombardy poplar 4 ft. apart, and *Cupressus Lawsoniana* planted between and 4 ft. away from the poplars. This shelter has reached the stage when the poplars should be topped at the height indicated in the illustration in which several feet of upper growth are not shown. The *Lawsonianas* would be improved if they were evened up on top and the fence moved farther out into the field. Stock are commencing to destroy the lower branches.

The time of the year to plant trees depends on the climatic conditions chiefly, and to some extent on the variety and age of the young trees. In the Auckland Province planting may be commenced in April, as soon as the soil is moist enough, and should be completed by early September. It has been found that trees planted before the end of May generally give the best results. Planting in mid-winter—June and July—should be done only with the hardy conifers. In districts where severe frosts are experienced, planting must be left until spring, from early August till mid-October.

In planting on the farm the greatest care should be taken in the preparation of the land, and every chance given the young trees to make rapid and early growth. If it is intended to plough the land, the ploughing should be done in summer and should be