

Both field and glasshouse experiments indicate that Lord Chancellor and Little Marvel peas are either immune or highly resistant to pea-mosaic. Observations made in the field both at Palmerston North and



FIG. 6. THE STUNTING EFFECT OF PEA-MOSAIC ON RED CLOVER. HEALTHY PLANT ON RIGHT.

[Photo by H. Drake.

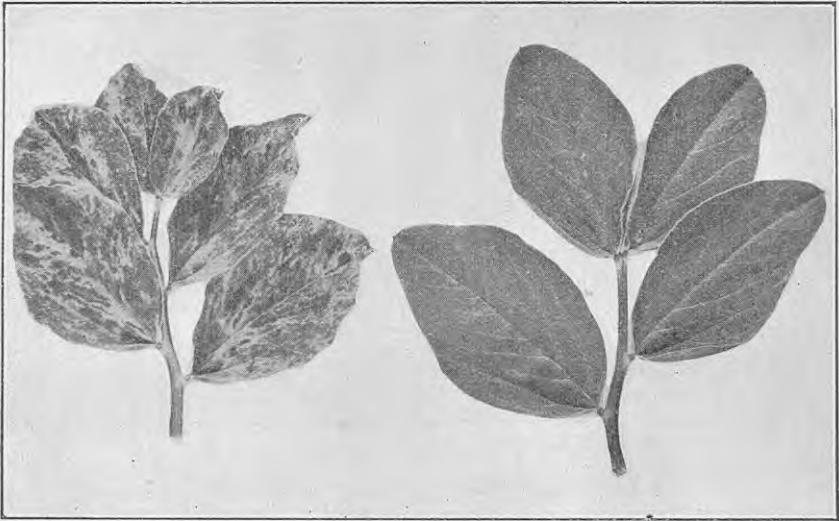


FIG. 7. MOTTLING OF BROAD BEAN LEAF CAUSED BY PEA-MOSAIC. LEAF FROM HEALTHY PLANT ON RIGHT.

[Photo by H. Drake.

Blenheim suggest that there are certain other varieties which do not develop mosaic, and experiments are being carried out to test for immunity the more commonly grown pea varieties in New Zealand.