

FIG. 8. LOGGING-UP A BURN.

This operation not only eliminates harbourage for secondary growth, but when the ashes are sown adds so much more grazable land.

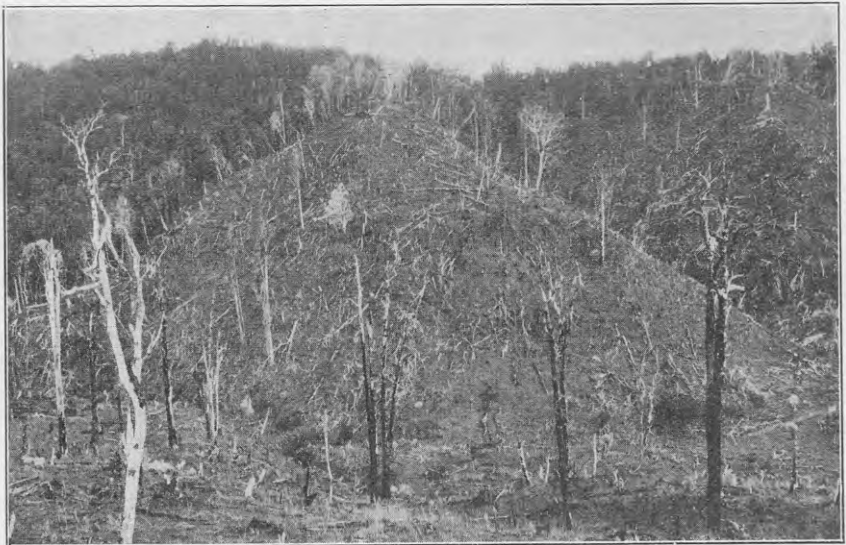


FIG. 9. PRIMARY BURN IN FOREGROUND, SHOWING SMALL FLAT WHICH SIX YEARS PREVIOUSLY WAS A MASS OF TIMBER AND SCOTCH THISTLE FOLLOWING A BAD BURN.

The track scene shown in Fig. 5 was taken on this flat. A log fire is seen on the left.

[Photos by E. Bruce Levy.