

FIG. 10. NEW ZEALAND AND IMPORTED LINES COMPARED: RECOVERY IN FOREGROUND AFTER HAY.

True perennial (Hawke's Bay Type 1) on left; false perennial (imported Types 4 and 5) on right. Cattle series behind labels.

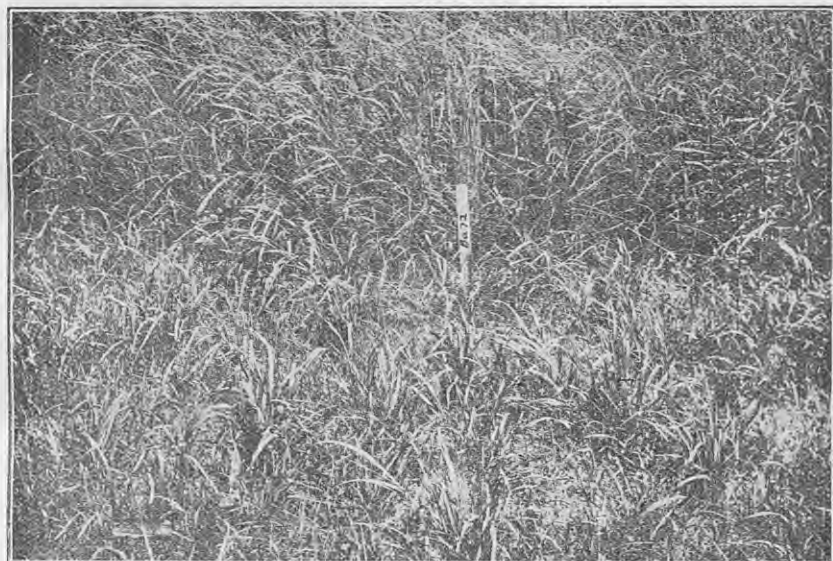


FIG. 11. RECOVERY, AFTER HAY-CUT, OF IRISH "PERENNIAL" RYE-GRASS.

This line is a false perennial (Type 4) containing much Italian. Photo shows good recovery of the Italian and typical poor recovery of the false perennial. This figure and Fig. 10 emphasize the futility of trying to better our rye-grass position by wholesale importations.

[Photos by E. Bruce Levy.