



FIG. 4. BADLY GRADED LINE OF SEED.

sieves. On the other hand, probably every home has a set of moderately reliable scales, and taking tuber-weights is both accurate and convenient, and falls into line with the custom of referring to the size of tubers in terms of ounces.

It has already been explained that the average weight gives no indication of the uniformity of grading, but the degree of uniformity

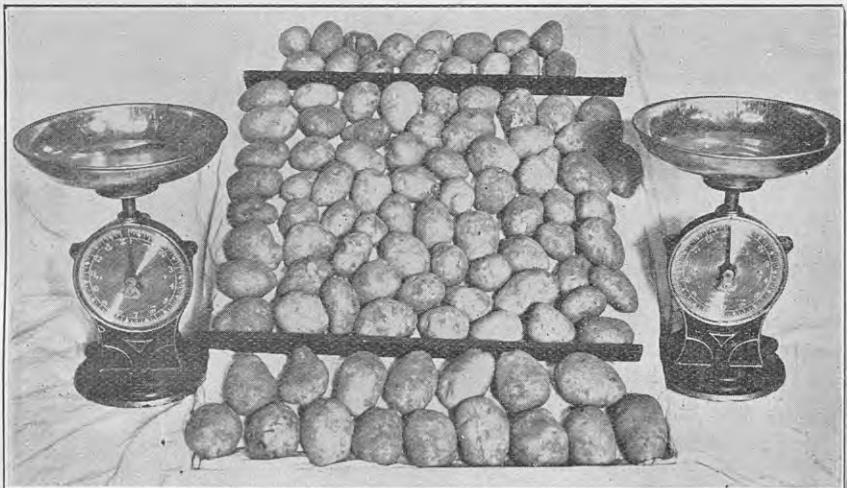


FIG. 5. SAME LINE AS IN FIG. 4, SHOWING SIXTEEN LARGEST AND SIXTEEN SMALLEST TUBERS SEPARATED READY FOR WEIGHING.