

FIG. 2. PORTION OF MR. WARD'S FARM AND HERD (DRY STOCK).  
The Manawaru cheese-factory is seen in distance.

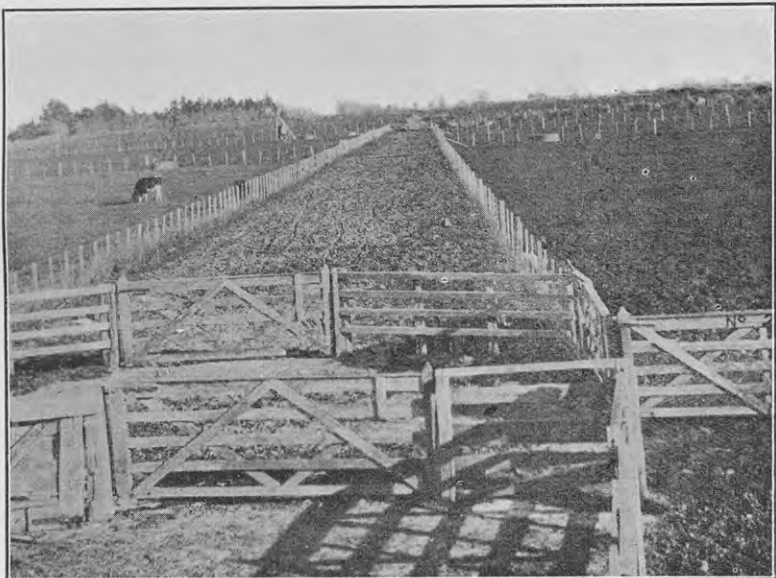


FIG. 3. SHOWING CENTRAL RACE ON THE FARM, TOGETHER WITH SUB-DIVISIONS, WATER-TROUGHS, ETC.

Photos taken in August.