

root-system, by which a moderate growth is obtained, but the life, growth, and usefulness of the new roots are subject to attack under the same conditions which influence the life of the original roots. The tap-root and secondary roots, when diseased, are destitute of root-hairs, and the root-nodules generally abundant on leguminous plants are absent.

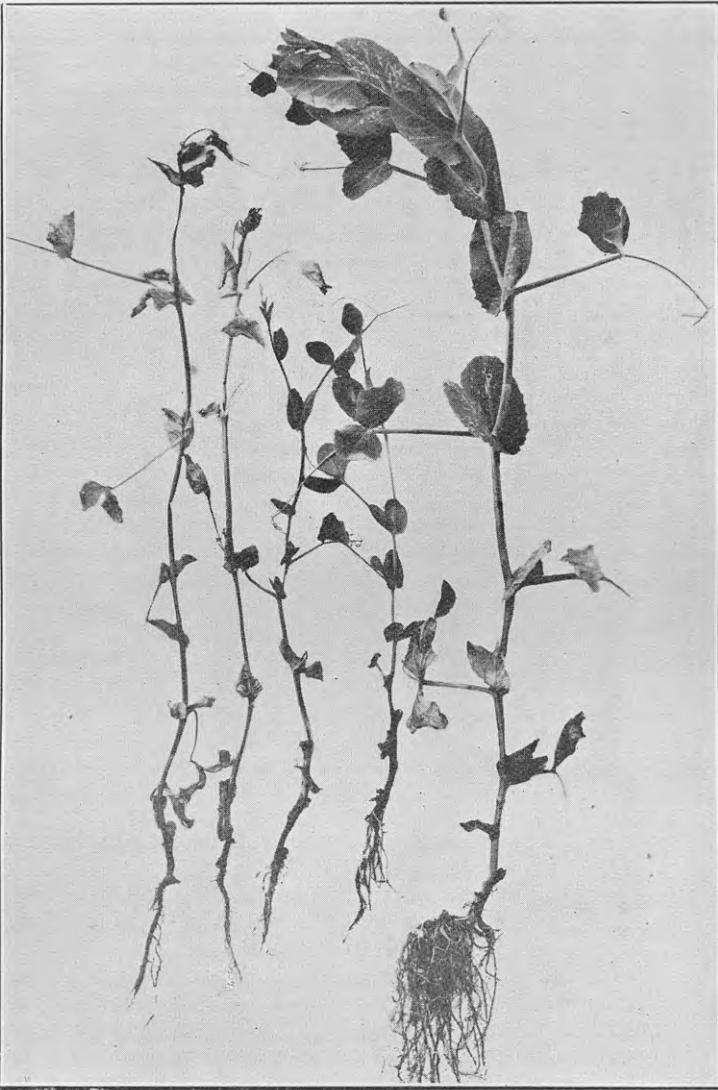


FIG. 1. SHOWING FOUR DISEASED PEA-PLANTS ON LEFT AND HEALTHY PLANT ON RIGHT.

Healthy plant was sown from same line of seed and at same time as diseased plants.

[All photos by H. Drake.]