

lambs were culled out, but the bulk were kept, and were shorn as hoggets in 1922. An examination of the fleeces showed the same results as in the previous line of hoggets, which was only to be expected as the animals were full sisters. On the farm we now had two lines of ewes by the same ram out of the same ewes.

*Year 1922.*—The strong-woolled ram was now replaced by a fine-woolled Romney (No. 2). Many of the oldest ewes had been culled out and sold about this time. The new ram was of splendid constitution, and possessed good conformation—neck well set, shoulders

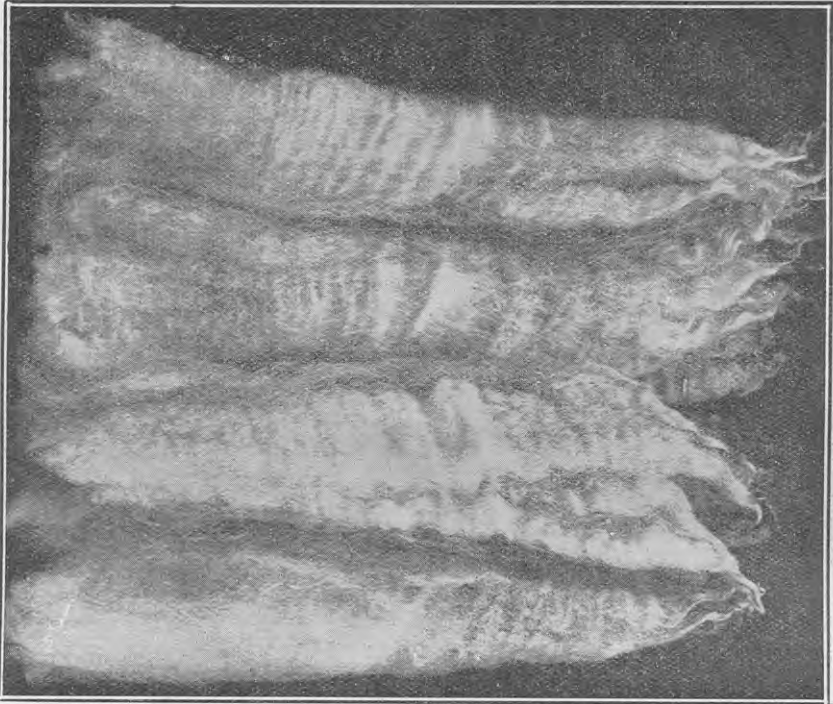


FIG. 3. WOOL FROM HOGGETS, PROGENY OF THE STRONG-WOOLLED ROMNEY RAM (NO. 1) AND THE ORIGINAL EWES; 1921-22 SHEARING.

level and set forward, level back, good loin and hind quarters, well-shaped head, breadth between the eyes, and face a nice length. The wool grown by this ram was very even in quality—46's to 48's—and had considerable character. It also possessed a fair degree of density—a most desirable feature. He was, in fact, a very good all-round animal, and it is a pity he could not have been used on a larger place.

This ram was mated with the ewes on the farm, including the ewe hoggets lambed in 1920 and shorn in latter part of 1921. The crop of lambs from the mating was very good, showing a decided improvement in both conformation and wool. All the ewe lambs were kept