



FIG. 1. SHOWING DEPOSIT OF PUMICE ON TOP OF RHYOLITE ROCK AT QUARRY NEAR MAMAKU.

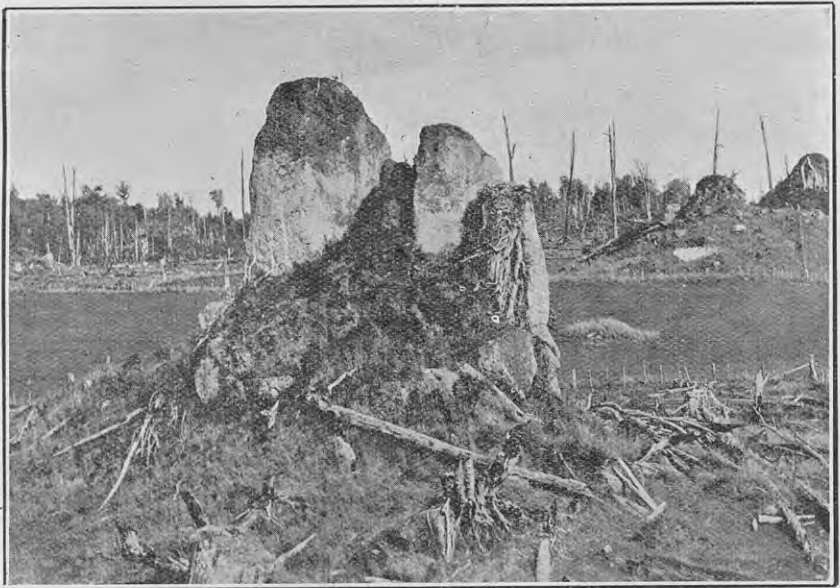


FIG. 2. TYPICAL MAMAKU PHYSIOGRAPHY ON CLEARED LAND.  
Rhyolite necks or pillars at cross-roads between Mamaku and Steele's Mill.

[All photos by B. C. Aston.