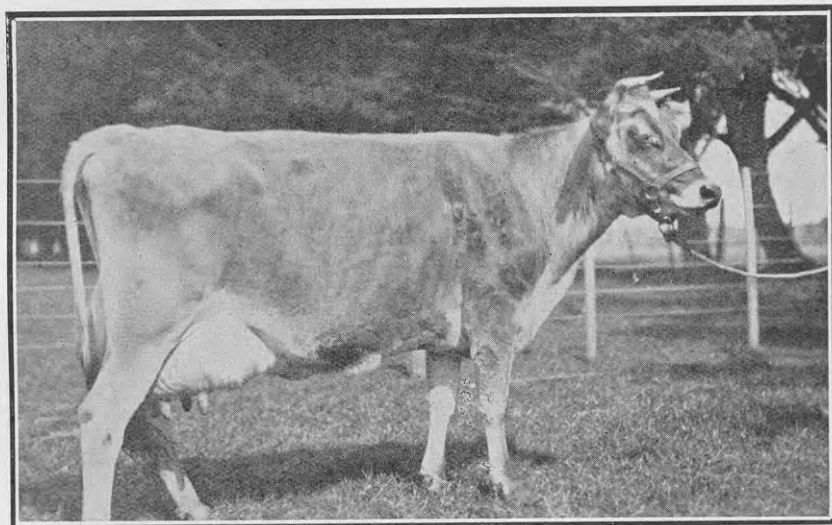


LIST OF RECORDS—*continued.*

Name of Cow and Class.	Tested by	Age at starting Test.	Fat req'd for Cert.	Yield for Season.		
				Days.	Milk.	Fat.
AYRSHIRES.						
<i>Four-year-old.</i> May Flower of Ayrshire Downs	Litchfield Bros., Tirau	4 0	313.5	365	8,838.0	379.10
<i>Mature.</i> Sadie of Edendale ..	W. Hall, Lepperton	7 333	350.0	365	12,084.1	530.00
Braemar Fanny ..	Litchfield Bros., Tirau	7 319	350.0	365	12,874.9	529.06
Fancy of Armadale	W. Hall, Lepperton	12 8	350.0	327	11,475.2	491.26
SHORTHORN.						
Sunnyside Princess VII	Sunnyside Mental Hospital, Christchurch.	4 83	321.8	286	6,356.6	324.91
<i>Second-class Certificate.</i>						
JERSEY.						
<i>Senior Two-year-old.</i> Maori Nell ..	J. B. Laurenson, Hawera	2 280	268.5	365	9,124.1	534.67



EATON LADY REYNECOURT (D. WATKIN, TAKANINI).

C.O.R., 1923, in Jersey Mature Class: 12,777.3 lb. milk, 871.39 lb. butterfat, in 365 days.

Winemaking.—The yield of wine in the Dominion last season is estimated at 85,000 gallons. At a reasonable estimate of 8s. per gallon this represents a value of £34,000.