

## MILKING-PREMISES FOR TOWN SUPPLY.

### A GOOD MODEL.

Live-stock Division.

DURING the past few years the standard of dairies supplying milk for city or town consumption in the Dominion has been steadily raised, largely as the result of inspection and advice by the Department of Agriculture. There is still room, however, for considerable improvement in design and general efficiency among the ordinary run of such premises. With a view to presenting what may be regarded as a

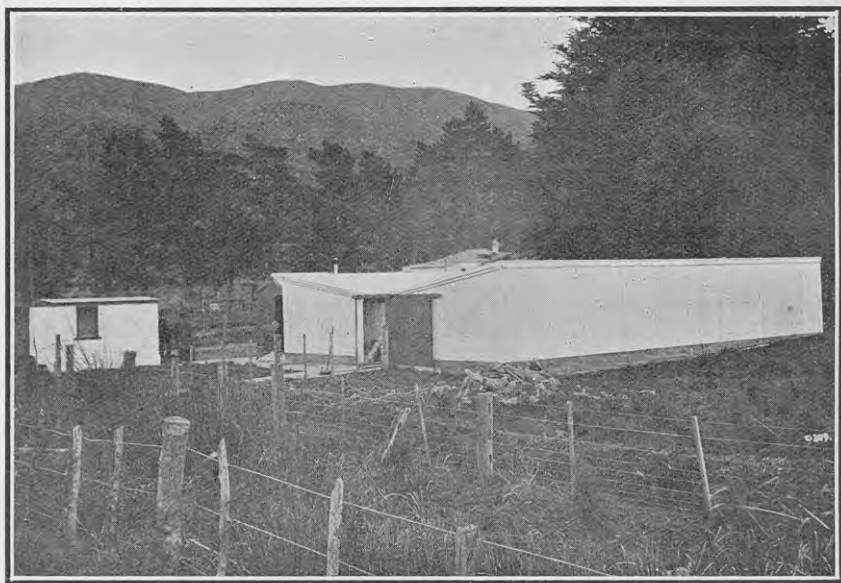


FIG. 1. GENERAL VIEW OF MR. HUSE'S MILKING-PREMISES.

good model for the class of larger suburban dairies a set of photographs has been taken of the milking-premises of Mr. W. Huse, at his dairy farm, "Cottleville," Hayward's, in the Hutt Valley, near Wellington. These are here reproduced, together with some descriptive notes.

Fig. 1 gives an external view of the premises, which lie practically east and west, thus affording protection against the prevailing winds and dust. For further protection a sliding-door is placed at each end. The shed is built entirely of corrugated iron and concrete, with the exception of the bail-heads and the frame, which are plated into a low concrete wall. The white building on the left is the milk-house, and