

FIG. 30. PIRIPIRI IN A CLOSELY GRAZED PASTURE.

Showing how sheep keep the grass-turf close immediately bordering the piripiri patches. This favours the spread of piripiri.

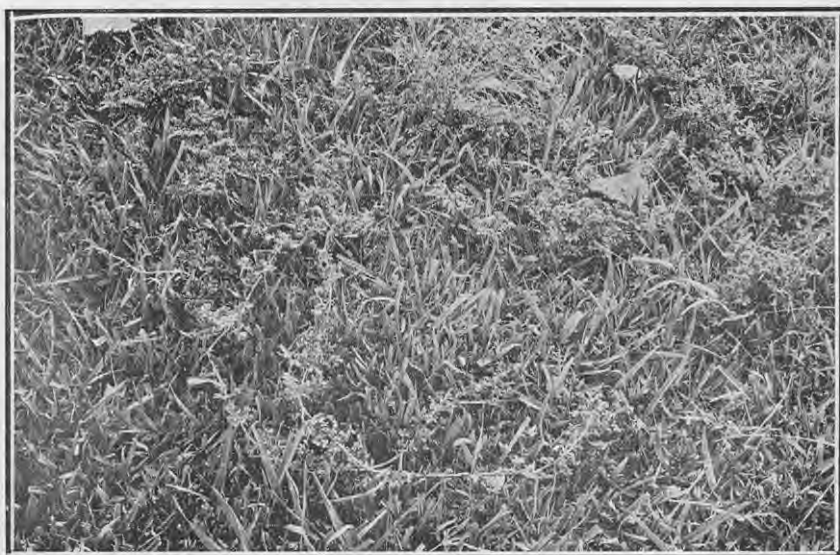


FIG. 31. PIRIPIRI BEING KEPT UP OFF THE GROUND BY A GOOD SWARD OF GRASS.

Note the two long runners in the centre of the photo, some 3 ft. long without a single root. The grass-turf is one of *paspalum*.

[Photos by E. Bruce Levy.]