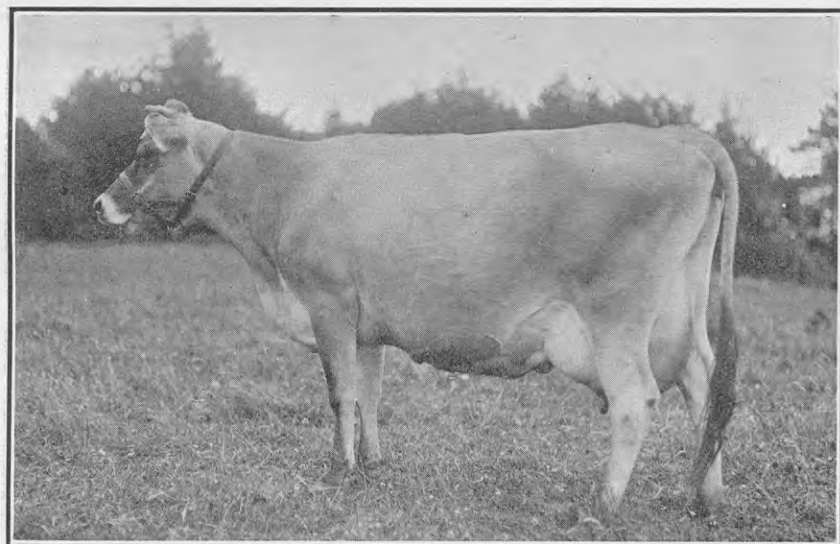


evidence of the fact that the young stock of this breed may reasonably be expected to develop some heavy producers. The average certificate-of-record Jersey for 1922 produced 443.75 lb. butterfat from 8,007.5 lb. milk in 344 days. Since the commencement of the system in New Zealand 1,822 certificates have been issued to Jersey cows, and the records represented average 7,572.57 lb. milk and 420.21 lb. butterfat in 342 days. The average test works out at 5.55 per cent.

The figures for 1922, together with those for 1921 for purposes of comparison, are as follows:—

Class.	Number of Cows.	Average Yield for Season.		
		Days in Milk.	Milk.	Fat.
		1922.		
Junior two-year-old ..	176	342	6,950.4	390.17
Senior two-year-old ..	41	350	7,815.2	427.75
Three-year-old ..	57	337	8,342.8	462.10
Four-year-old ..	37	348	8,869.7	498.37
Mature ..	86	349	9,669.5	525.38
		1921.		
Junior two-year-old ..	151	342	6,281.1	351.37
Senior two-year-old ..	35	336	6,825.8	383.39
Three-year-old ..	55	332	7,620.3	430.67
Four-year-old ..	50	343	8,147.0	467.80
Mature ..	97	340	8,686.5	478.39



ST. LAMBERT'S BELL (A. J. SMITH, CARDIFF).

Leader of the Jersey four-year-old class. C.O.R., 1922: 4 years 283 days; in 365 days, 14,423.1 lb. milk, 780.32 lb. butterfat.