

It may appear to many readers that numerous trees and shrubs have been omitted from these lists, but those enumerated have all been grown at Ruakura with satisfactory results.

NOT RECOMMENDED FOR RUAKURA CONDITIONS.

The following trees and shrubs cannot be recommended for planting on land and in positions similar to those at Ruakura:—

(1.) Attacked severely by pests and diseases: *Pinus halepensis* (Aleppo pine), *Pinus Sylvestris* (Scots pine), *Picea excelsa*, *Picea Menziesii*, *Cryptomeria elegans*, *Pittosporum eugenioides*, *Pittosporum crassifolium*, *Olearia Fosterii*, *Olearia Traversii*, *Viburnum Tinus* (laurestinus)

(2.) Killed or badly affected by frost: *Vitex littoralis* (puriri), *Corynocarpus laevigatus* (karaka), *Meryta Sinclairii* (puka), *Tecoma capensis*.

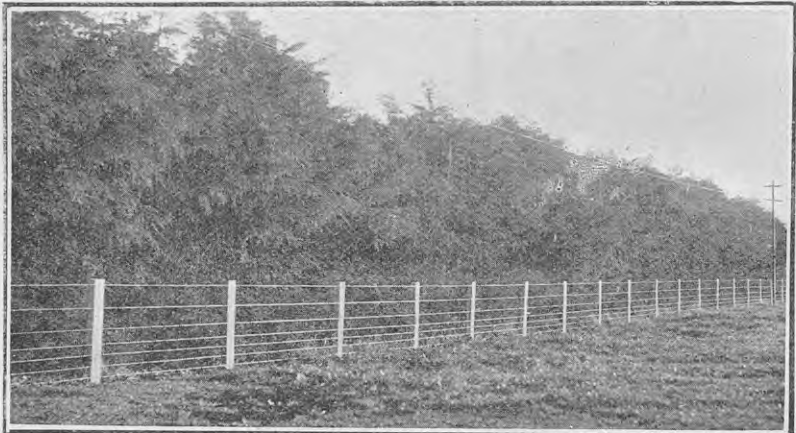


FIG. 3. CUPRESSUS BENTHAMII HEDGE, RUAKURA.

Eleven years old. Note the overhanging growth, affording shade as well as shelter.

SOME SPECIAL POINTS.

Attention may here be called to a few special points of interest in connection with the Ruakura plantings. It will be noticed that *Cupressus Lawsoniana* takes first place as an all-round ornamental and shelter tree. If allowed to grow unchecked it forms a high and beautiful tree, affording excellent shelter right to the ground, as shown in Fig. 1. If planted closer together in a single row and clipped once a year it forms an excellent dense wind-proof hedge (Fig. 2). The tree is easily raised from seed, readily transplanted, hardy and vigorous, fairly quick-growing, will succeed in a great variety of soils and situations, is practically free from pests and diseases, and is not palatable to live-stock. It has therefore many good qualities to commend it.

A splendid hedge of *Cupressus Benthamii*, eleven years old, is seen in Fig. 3. This variety of cypress had made heavier top growth than