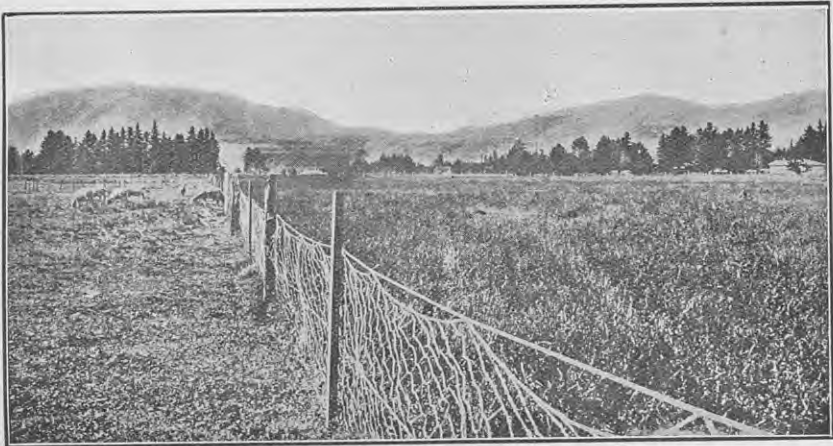


THE WALLACEVILLE PASTURE EXPERIMENTS.



VIEW OF PADDOCKS NOS. 2 AND 3, LOOKING WEST.

No. 2 (left hand), untreated *Danthonia pilosa* pasture, carrying $1\frac{1}{2}$ sheep to the acre; separated by netting from No. 3 (right hand), treated with unground native limestone rubble and 5 cwt. finely ground phosphate rock per acre in August, 1915, carrying $5\frac{1}{2}$ sheep to the acre. Taken 19/12/18. [B. C. Aston, photo.]



VIEW OF PADDOCK NO. 3, LOOKING NORTH INTO PADDOCK NO. 4

Taken 19/12/18.

(LIMESTONE ALONE).

[B. C. Aston, photo.]