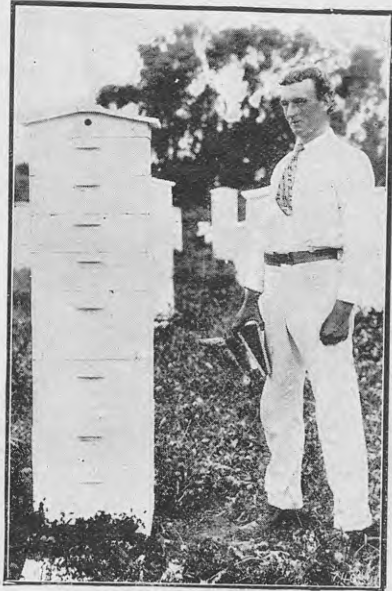


RESULT OF GOOD MANAGEMENT.

L. BOWMAN.

THE accompanying photograph is one of the evidences to be seen on a plant in the Canterbury District of the application of modern methods applied by an apiarist imbued with enthusiasm and never sparing in his energy. The apiary was established at Fendalton three years ago with about twenty colonies, which were increased to seventy-two at the beginning of the present season. With the object of establishing his hobby as an independent business, the owner, Mr. R. M. Gidley, removed the plant to the Ellesmere district. At this time all the colonies were in a very weak condition owing to unfavourable weather-conditions; but, notwithstanding an adverse spring, Mr. Gidley has by dint of unremitting but intelligent work built up large powerful colonies to the number of 100, all provided with ample stores to carry them through the coming winter. The photograph shows a typical colony which from a weak foundation has been built up into a hive providing 417 lb. of honey. Besides the take from the apiary—which is very creditable, 4 tons 17 cwt.—2,100 combs have been built out from foundation. At 4½d. a pound, at which price the honey is being sold privately, the return from the young business is under the circumstances a speaking example of what can be done by a keen amateur developing his hobby into a commercial undertaking with expanding knowledge.



In 1911 Austrian co-operative associations having as their object the purchase of fertilizers and feeding-stuffs were subsidized by the Government to the extent of £5,300.