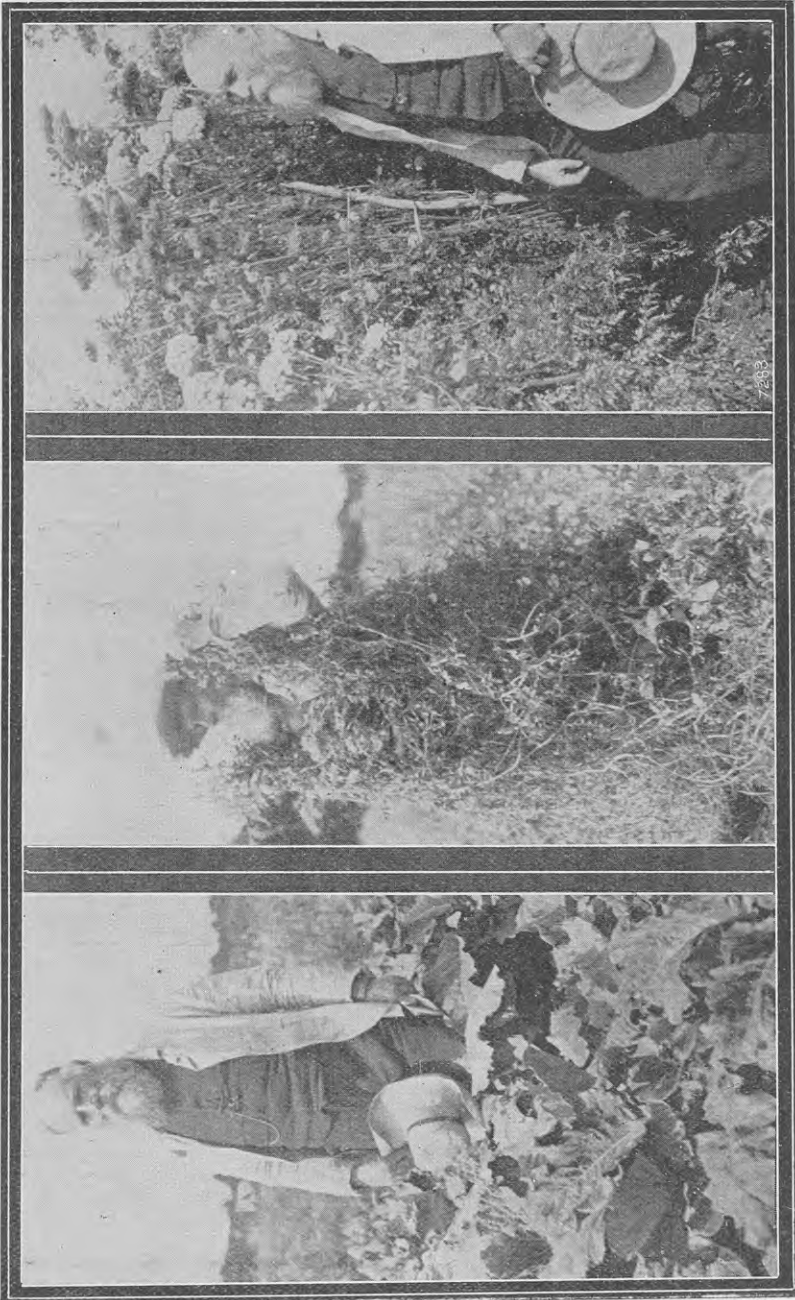


CO-OPERATIVE EXPERIMENTS AT PATEA CARRIED OUT BY MR. WILLIAM ARUNDELL.



SELECTED WHITE BELGIAN CARROTS.
GROWN FOR SEED.

VICIA VILLOSA, IMPORTED FROM U.S.A
GROWN FOR SEED.

A PLOT OF CHOU MOELLIER.

G. de S. Baylis, photo.]